

## Recombinant Human MAP2K6 Protein (Phe46-Pro306), N-His tagged

Cat. No. MAP2K6-5007H Lot. No. (See product label)

### SPECIFICATION

<b>Product Overview</b>	Recombinant human MAP2K6 (Phe46-Pro306) fused with the N-His tag was expressed in E. coli.
<b>Species</b>	Human
<b>Source</b>	E.coli
<b>ProteinLength</b>	Phe46-Pro306
<b>Form</b>	Lyophilized powder/frozen liquid
<b>Molecular Mass</b>	31.76 kDa
<b>Purity</b>	>90% as determined by SDS-PAGE.
<b>Notes</b>	For research use only.
<b>Storage</b>	Use a manual defrost freezer and avoid repeated freeze thaw cycles. Store at 2 to 8 centigrade for one week. Store at -20 to -80 centigrade for twelve months from the date of receipt.
<b>Storage Buffer</b>	0.01M PBS, pH 7.4, 0.02% NLS
<b>Reconstitution</b>	Reconstitute in sterile water for a stock solution.

 Tel: 1-631-559-9269 1-516-512-3133

 Email: [info@creative-biomart.com](mailto:info@creative-biomart.com)  Fax: 1-631-938-8127

 45-1 Ramsey Road, Shirley, NY 11967, USA

**Shipping** They are shipped out with dry ice/blue ice unless customers require otherwise.

## GENE INFORMATION

**Gene Name** MAP2K6 mitogen-activated protein kinase kinase 6 [ Homo sapiens (human) ]

**Official Symbol** MAP2K6

**Synonyms** MAP2K6; mitogen-activated protein kinase kinase 6; PRKMK6; dual specificity mitogen-activated protein kinase kinase 6; MAPKK6; MEK6; MKK6; protein kinase; mitogen activated; kinase 6 (MAP kinase kinase 6); SAPKK3; MEK 6; MAPKK 6; SAPK kinase 3; MAPK/ERK kinase 6; stress-activated protein kinase kinase 3; protein kinase, mitogen-activated, kinase 6 (MAP kinase kinase 6); SAPKK-3;

**Gene ID** 5608

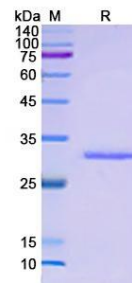
**mRNA Refseq** NM\_002758

**Protein Refseq** NP\_002749

**MIM** 601254

**UniProt ID** P52564

### SDS-PAGE



 Tel: 1-631-559-9269 1-516-512-3133

 Email: [info@creative-biomart.com](mailto:info@creative-biomart.com)  Fax: 1-631-938-8127

 45-1 Ramsey Road, Shirley, NY 11967, USA