

Recombinant Human MAP2K6 Protein, Myc/DDK-tagged, C13 and N15-labeled

Cat. No. MAP2K6-6391H **Lot. No.** (See product label)

SPECIFICATION

Product Overview

MAP2K6 MS Standard C13 and N15-labeled recombinant protein (NP_002749) with a C-terminal MYC/DDK tag, was expressed in HEK293 cells.

Species

Human

Source

HEK293

Description

This gene encodes a member of the dual specificity protein kinase family, which functions as a mitogen-activated protein (MAP) kinase kinase. MAP kinases, also known as extracellular signal-regulated kinases (ERKs), act as an integration point for multiple biochemical signals. This protein phosphorylates and activates p38 MAP kinase in response to inflammatory cytokines or environmental stress. As an essential component of p38 MAP kinase mediated signal transduction pathway, this gene is involved in many cellular processes such as stress induced cell cycle arrest, transcription activation and apoptosis.

Molecular Mass

37.5 kDa

AA Sequence

MSQSKGKKRNPGLKIPKEAFEQPQTSSTPPRDLSKACISIGNQNFEVKADDLEPIM
ELGRGAYGVVEKMRHVPSGQIMAVKRIRATVNSQEQKRLMDLDISMRTVDCPFTV
TFYGALFREGDVWICMELMDTSLDKFYKQVIDKGQTIPEDILGKIAVSIVKALEHLHSK
LSVIHRDVKPSNVLINALGQVKMCDFGISGYLVDSVAKTIDAGCKPYMAPERINPELN
QKGYSVKSDIWSLGITMIELAILRFPYDSWGTPFQQLKQVVEEPSQLPADKFSAEF

 Tel: 1-631-559-9269 1-516-512-3133

 Email: info@creative-biomart.com  Fax: 1-631-938-8127

 45-1 Ramsey Road, Shirley, NY 11967, USA

VDFTSQCLKKNSKERPTYPELMQHPFFTLHESKGTDVASFVKLILGDTRTRPLEQKLI
SEEDLAANDILDYKDDDDKV

Purity > 80% as determined by SDS-PAGE and Coomassie blue staining

Stability Stable for 3 months from receipt of products under proper storage and handling conditions.

Storage Store at -80 centigrade. Avoid repeated freeze-thaw cycles.

Concentration 50 µg/mL as determined by BCA

Storage Buffer 100 mM glycine, 25 mM Tris-HCl, pH 7.3.

GENE INFORMATION

Gene Name [MAP2K6 mitogen-activated protein kinase kinase 6 \[Homo sapiens \(human\) \]](#)

Official Symbol [MAP2K6](#)

Synonyms MAP2K6; mitogen-activated protein kinase kinase 6; PRKMK6; dual specificity mitogen-activated protein kinase kinase 6; MAPKK6; MEK6; MKK6; protein kinase; mitogen activated; kinase 6 (MAP kinase kinase 6); SAPKK3; MEK 6; MAPKK 6; SAPK kinase 3; MAPK/ERK kinase 6; stress-activated protein kinase kinase 3; protein kinase, mitogen-activated, kinase 6 (MAP kinase kinase 6); SAPKK-3;

Gene ID [5608](#)

mRNA Refseq [NM_002758](#)

Protein Refseq [NP_002749](#)

 Tel: 1-631-559-9269 1-516-512-3133

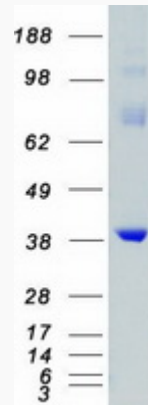
 Email: info@creative-biomart.com  Fax: 1-631-938-8127

 45-1 Ramsey Road, Shirley, NY 11967, USA

MIM 601254

UniProt ID P52564

SDS-PAGE



 Tel: 1-631-559-9269 1-516-512-3133

 Email: info@creative-biomart.com  Fax: 1-631-938-8127

 45-1 Ramsey Road, Shirley, NY 11967, USA