

Recombinant Full Length Human MAP2K7 Protein, C-Flag-tagged

Cat. No. MAP2K7-1511HFL **Lot. No.** (See product label)

SPECIFICATION

Product Overview	Recombinant Full Length Human MAP2K7 Protein, fused to Flag-tag at C-terminus, was expressed in Mammalian cells.
Species	Human
Source	Mammalian Cells
Description	The protein encoded by this gene is a dual specificity protein kinase that belongs to the MAP kinase kinase family. This kinase specifically activates MAPK8/JNK1 and MAPK9/JNK2, and this kinase itself is phosphorylated and activated by MAP kinase kinase kinases including MAP3K1/MEKK1, MAP3K2/MEKK2, MAP3K3/MEKK5, and MAP4K2/GCK. This kinase is involved in the signal transduction mediating the cell responses to proinflammatory cytokines, and environmental stresses. Alternative splicing results in multiple transcript variants.
Form	25 mM Tris HCl, pH 7.3, 100 mM glycine, 10% glycerol.
Molecular Mass	47.3 kDa
AA Sequence	MAASSLEQKLSRLEAKLKQENREARRRIDLNLDISPQRPRPTLQLPLANDGGSRSPS SESSPQHPTPPAR PRHMLGLPSTLFTPRSMESIEIDQKLQEIMKQTGYLTIGGQRYQ AEINDLENLGENSGTTCGQVWKMFRF KTGHVIAVKQMRRSGNKEENKRILMDLDV VLKSHDCPYIVQCFGTFITNTDVFIAEMLMGTCAEKLLKRM QGPIPERILGKMTVAIV KALYYLKEKHGVIHRDVKPSNILLDERGQIKLCLDFGISGRLVDSKAKTRSAGC AAYM

 Tel: 1-631-559-9269 1-516-512-3133

 Email: info@creative-biomart.com  Fax: 1-631-938-8127

 45-1 Ramsey Road, Shirley, NY 11967, USA

APERIDPPDPTKPDYDIRADVWSLGLISLVELATGQFPYKNCKTDFEVLTKVLQEEPPL
 LPGHMGFS GDFQSFVKDCLTKDHRKRPKYNKLLHSHFIKRYETLEVDVASWFKDV
 MAKTESPRTSGVLSQPHLPFFRTRTRPLEQKLISEEDLAANDILDYKDDDDKV

Purity	> 80% as determined by SDS-PAGE and Coomassie blue staining.
Stability	Stable for 12 months from the date of receipt of the product under proper storage and handling conditions. Avoid repeated freeze-thaw cycles.
Storage	Store at -80 centigrade.
Concentration	>50 ug/mL as determined by microplate BCA method.
Preparation	Recombinant protein was captured through anti-DDK affinity column followed by conventional chromatography steps.
Protein Families	Druggable Genome, Protein Kinase
Protein Pathways	ErbB signaling pathway, Fc epsilon RI signaling pathway, GnRH signaling pathway, MAPK signaling pathway, Neurotrophin signaling pathway, T cell receptor signaling pathway, Toll-like receptor signaling pathway
Full Length	Full L.

GENE INFORMATION

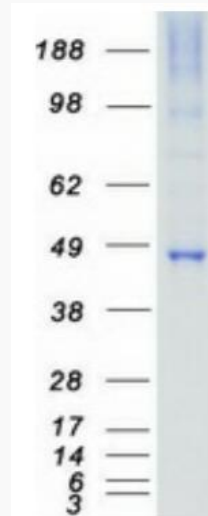
Gene Name	MAP2K7 mitogen-activated protein kinase kinase 7 [Homo sapiens (human)]
Official Symbol	MAP2K7
Synonyms	MEK; MKK7; JNKK2; MEK 7; MAPKK7; PRKMK7; SAPKK4; SAPKK-4

 Tel: 1-631-559-9269 1-516-512-3133

 Email: info@creative-biomart.com  Fax: 1-631-938-8127

 45-1 Ramsey Road, Shirley, NY 11967, USA

Gene ID	5609
mRNA Refseq	NM_145185.4
Protein Refseq	NP_660186.1
MIM	603014
UniProt ID	O14733



Coomassie blue staining of purified MAP2K7 protein.

 Tel: 1-631-559-9269 1-516-512-3133

 Email: info@creative-biomart.com  Fax: 1-631-938-8127

 45-1 Ramsey Road, Shirley, NY 11967, USA