

# Active Recombinant Full Length Human MAP2K7 Protein, GST-tagged

**Cat. No.** MAP2K7-2337HF    **Lot. No.** (See product label)

## SPECIFICATION

**Product Overview** Full-length human MAP2K7 [1-419(end) amino acids of accession number NP\_660186.1] was co- expressed as N-terminal GST-fusion protein (75 kDa) with human His-tagged MAP3K3 [1-626(end) amino acids of accession number NP\_002392.2] using baculovirus expression system. GST-MAP2K7 was purified by using glutathione sepharose chromatography.

**Species** Human

**Source** Sf21 Cells

**ProteinLength** 1-419(end)

**Form** 50 mM Tris-HCl, 150 mM NaCl, 0.05% Brij35, 1 mM DTT, 10% glycerol, pH7.5

**Bio-activity** The activity was determined by ELISA. The enzyme was incubated with GST-fused substrate protein, and after stopping kinase reaction by EDTA, the reaction solution was transferred into glutathione-coated plate. Phosphorylation was detected by anti-phospho antibody and HRP-labeled anti-rabbit IgG(or HRP-labeled anti-mouse IgG) .

**Purity** 90%

**Applications** SDS-PAGE

**Storage** Store at -80C. Avoid repeating freeze-thaws.

 Tel: 1-631-559-9269    1-516-512-3133

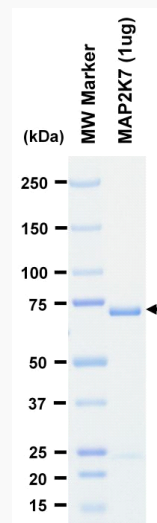
 Email: [info@creative-biomart.com](mailto:info@creative-biomart.com)     Fax: 1-631-938-8127

 45-1 Ramsey Road, Shirley, NY 11967, USA

## GENE INFORMATION

<b>Gene Name</b>	mitogen-activated protein kinase kinase 7
<b>Official Symbol</b>	MAP2K7
<b>Synonyms</b>	MAP2K7;JNKK2;MAPKK7;MEK;MEK7;MKK7;PRKMK7;SAPKK-4;SAPKK4;Jnkk2
<b>Protein Refseq</b>	<a href="#">NP_660186.1</a>
<b>UniProt ID</b>	<a href="#">O14733</a>

## SDS-PAGE



The purity was assessed by SDS-PAGE/CBB staining.

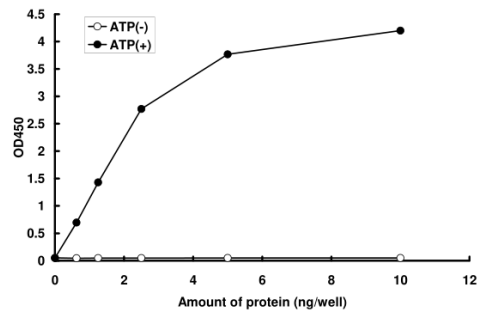
Tel: 1-631-559-9269 1-516-512-3133

Email: [info@creative-biomart.com](mailto:info@creative-biomart.com) Fax: 1-631-938-8127

45-1 Ramsey Road, Shirley, NY 11967, USA

### Activity data

Activity data



The activity was determined by ELISA. The enzyme was incubated with GST-fused substrate protein, and after stopping kinase reaction by EDTA, the reaction solution was transferred into glutathione-coated plate. Phosphorylation was detected by anti-phospho antibody and HRP-labeled anti-rabbit IgG (or HRP-labeled anti-mouse IgG)

Tel: 1-631-559-9269 1-516-512-3133

Email: [info@creative-biomart.com](mailto:info@creative-biomart.com) Fax: 1-631-938-8127

45-1 Ramsey Road, Shirley, NY 11967, USA