

Recombinant Full Length Human MAP3K1 Protein, C-Flag-tagged

Cat. No. MAP3K1-1515HFL **Lot. No.** (See product label)

SPECIFICATION

Product Overview	Recombinant Full Length Human MAP3K1 Protein, fused to Flag-tag at C-terminus, was expressed in Mammalian cells.
Species	Human
Source	Mammalian Cells
Description	The protein encoded by this gene is a serine/threonine kinase and is part of some signal transduction cascades, including the ERK and JNK kinase pathways as well as the NF-kappa-B pathway. The encoded protein is activated by autophosphorylation and requires magnesium as a cofactor in phosphorylating other proteins. This protein has E3 ligase activity conferred by a plant homeodomain (PHD) in its N-terminus and phospho-kinase activity conferred by a kinase domain in its C-terminus.
Form	25 mM Tris HCl, pH 7.3, 100 mM glycine, 10% glycerol.
Molecular Mass	164.3 kDa
AA Sequence	<pre> MAAAAGNRASSSGFPGARATSPEAGGGGALKASSAPAAAAGLLREAGSGGRER ADWRRRQLRKVRSVEL DQLPEQPLFLAASPPASSTSPSPEPADAAGSGTGFPVA VPPPHGAASRGG AHLTESVAAPDSGASSPAA AEPGEKRAPAAEPSPAAAPAGREM ENKETLKG LHKMDDRPEERMIREK LKATCMPAWKHEWLERRNRRGP VVKPIPVK GDGSEMNH LAAESPGEVQASAASPASKGRRSPSPGNPSGRTVKSESPGVRRKR VSPVPFQ SGRITPPRRAPSPDGFSPYSPEETNRRVNKVMRARLYLLQQIGPNSFLIG </pre>

 Tel: 1-631-559-9269 1-516-512-3133

 Email: info@creative-biomart.com  Fax: 1-631-938-8127

 45-1 Ramsey Road, Shirley, NY 11967, USA

GDSPDNKYRVFIGPQNCSCA RGTFCIHLLFVMLRVFQLEPSDPMLWRKTLKNFEVE
 SLFQKYHSRRSSRIKAPSRNTIQKFVSRMSNSHT LSSSSTSTSSSENSIKDEEEQMC
 PICLLGMLDEESLTVCEDGCRNKLHHHCMSIWAEECRRNREPLICPL CRSKWRSHD
 FYSHELSSPVDPSSLRAAQQQTVQQQPLAGSRRNQESFNLTHTYGTQQIPPAYKD
 LAEPW IQVFGMELVGCLFSRNWNVREMLRRLSHDVS GALLLANGESTGNSGGSS
 GSSPSGGATSGSSQTSISGD VVEACCSVLSMVCADPVYKVYVAALKTLRAMLVYTP
 CHSLAERIKLQRLQLPVDLTKCADANSRTSQ LSISTLLELCKGQAGELAVGREIL
 KAGSIGGGVDYVLCILGNQTESNNWQELLGRLCLIDRLLLEFPA EFYPHIVSTDVS
 QAEPVEIRYKLLSLLTFALQSIDNSHSMVGKLSRRIYLSSARMVTTVPHVFSKLLEM
 LSVSSSTHFTRMRRRLMAIADEVEIAEAIQLGVEDTLDGQQDSFLQASVPNNYLETT
 ENSSPECTVHLEK TGKGLCATKLSASSEDISERLASISVGPSSSTTTTTTTTEQPKP
 MVQTKGRPHSQCLNSSPLSHHSQLMF PALSTPSSSTPSVPAGTATDVSKHRLQGFI
 PCRIPSASPQTQRKFSLQFHRNCPENKSDSKLSPVFTQSR PLPSSNIHRPKPSRPT
 PGNTSKQGDPSKNSMTLDLNSSSKCDDSGCSSNSSNAVIPSDETVFTPVEEK RL
 DVNTELNSSIEDLLEASMPSSDTTVTFKSEVAVLSPEKAENDDTYKDDVNHNQKCKE
 KMEAEIEEEALA IAMAMSASQDALPIVPQLQVENGEDIIIIQQDTPETLPGHTKAKQPY
 REDTEWLKGGQIGLGAFSSCYQA QDVGTGTLMAVKQVTVRNTSSEQEEVVEALR
 EEIRMMSHLNHPNIIRMLGATCEKSNYNLFIEWMAGGS VAHLLSKYGAFKESVVINY
 TEQLLRGLSYLHENQIIHRDVKGANLLIDSTGQRLRIADFGAAARLASKGT GAGEFQ
 GQLLGTIAFMAPEVLRGQQYGRSCDVWSVGCIIEMACAKPPWNAEKHSNHLALIF
 KIASATTA
 PSIPSHLSPGLRDVALRCLELQPQDRPPSRELLKHPVFRTTWTRTRPLEQKLISEEDL
 AANDILDYKDDDDKV

Purity > 80% as determined by SDS-PAGE and Coomassie blue staining.

Stability Stable for 12 months from the date of receipt of the product under proper storage and handling conditions. Avoid repeated freeze-thaw cycles.

Storage Store at -80 centigrade.

 Tel: 1-631-559-9269 1-516-512-3133

 Email: info@creative-biomart.com  Fax: 1-631-938-8127

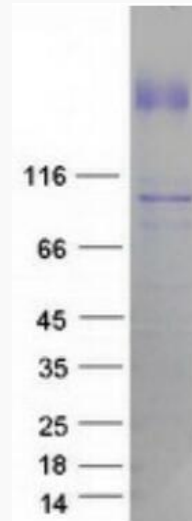
 45-1 Ramsey Road, Shirley, NY 11967, USA

Concentration	>50 ug/mL as determined by microplate BCA method.
Preparation	Recombinant protein was captured through anti-DDK affinity column followed by conventional chromatography steps.
Protein Families	Druggable Genome, Protein Kinase
Protein Pathways	GnRH signaling pathway, MAPK signaling pathway, Neurotrophin signaling pathway, RIG-I-like receptor signaling pathway, Ubiquitin mediated proteolysis
Full Length	Full L.
GENE INFORMATION	
Gene Name	MAP3K1 mitogen-activated protein kinase kinase kinase 1 [Homo sapiens (human)]
Official Symbol	MAP3K1
Synonyms	MEKK; MEKK1; SRXY6; MEKK 1; MAPKKK1
Gene ID	4214
mRNA Refseq	NM_005921.2
Protein Refseq	NP_005912.1
MIM	600982
UniProt ID	Q13233

 Tel: 1-631-559-9269 1-516-512-3133

 Email: info@creative-biomart.com  Fax: 1-631-938-8127

 45-1 Ramsey Road, Shirley, NY 11967, USA



Coomassie blue staining of purified MAP3K1 protein.

Tel: 1-631-559-9269 1-516-512-3133

Email: info@creative-biomart.com Fax: 1-631-938-8127

45-1 Ramsey Road, Shirley, NY 11967, USA