

# Recombinant Human MAP3K1 Protein, Myc/DDK-tagged, C13 and N15-labeled

**Cat. No.** MAP3K1-2121H    **Lot. No.** (See product label)

## SPECIFICATION

### Product Overview

MAP3K1 MS Standard C13 and N15-labeled recombinant protein (NP\_005912) with a C-terminal MYC/DDK tag, was expressed in HEK293 cells.

### Species

Human

### Source

HEK293

### Description

The protein encoded by this gene is a serine/threonine kinase and is part of some signal transduction cascades, including the ERK and JNK kinase pathways as well as the NF-kappa-B pathway. The encoded protein is activated by autophosphorylation and requires magnesium as a cofactor in phosphorylating other proteins. This protein has E3 ligase activity conferred by a plant homeodomain (PHD) in its N-terminus and phospho-kinase activity conferred by a kinase domain in its C-terminus.

### Molecular Mass

164.3 kDa

### AA Sequence

MAAAAGNRASSSGFPGARATSPEAGGGGGALKASSAPAAAAGLLREAGSGGRER  
ADWRRRQLRKVRSVELDQLPEQPLFLAASPPASSTSPSPEPADAAGSGTGFQPVV  
VPPPHGAASRGG AHLTESVAAPDSGASSPAAAEPGEKRAPAAEPSPAAAPAGREM  
ENKETLKGHLKMDDRPEERMIREKCLKATCMPAWKHEWLERRNRRGPVVVKPIPVK  
GDGSEMNHAAESPGEVQASAASPASKGRRSPSPGNSPSGRTVKSESPGVRRKR  
VSPVPFQSGRITPPRRAPSPDGFSPYSPEETNRRVNKVMRARLYLLQIGPNSFLIG  
GDSPDNKYRVFIGPQNCSCARGTFCIHLLFVMLRVFQLEPSDPMLWRKTLKNFEVE

 Tel: 1-631-559-9269    1-516-512-3133

 Email: [info@creative-biomart.com](mailto:info@creative-biomart.com)     Fax: 1-631-938-8127

 45-1 Ramsey Road, Shirley, NY 11967, USA

SLFQKYHSRRSSRIKAPSRNTIQKFVSRMSNSHTLSSSSTSTSSSENSIKDEEEQMC  
 PICLLGMLDEESLTVCEDGCRNKLHHHCMSIWAEECRNRREPLICPLCRSKWRS  
 HD FYSELSSPVDSPSSLRAAQQQTVQQQPLAGSRRNQESNPNLTHYGTQQIPPAYKD  
 LAEPWIQVFGMELVGLFSRNWNVREMLRRLSHDVGALLLANGESTGNSGGSS  
 GSSPSGGATSGSSQTSISGDVVEACCSVLSMVCADPVYKVYVAALKTLRAMLVYTP  
 CHSLAERIKLQRLLQPVVDTILVKCADANSRTSQLSISTLLELCKGQAGELAVGREILK  
 AGSIGIGGVYVNLNCILGNQTESNNWQELLGRLCLIDRLLLEFPAEFYPHIVSTDVSQ  
 AEPVEIRYKLLSLLTFALQSIDNSHSMVGLSRRIYLSSARMVTTVPHVFSKLEMLS  
 VSSSTHFTRMRRRLMAIADEVEIAEAIQLGVEDTLDGQQDSFLQASVPNNYLETTE  
 SSPECTVHLEKTGKGLCATKLSASSEDISERLASISVGPSSSTTTTTTTTEQPKPMVQ  
 TKGRPHSQCLNSSPLSHHSQLMFPALSTPSSSTPSVPAGTATDVSKHRLQGFI  
 PCRI PSASPQTQRKFSLQFHRNCPENKSDSKLSPVFTQSRPLPSSNIHRPKPSRPTPGNT  
 SKQGDPSKNSMTLDLNSSSKCDDSGC  
 SSNAVIPSDETFTVPEEKCRLDVNT  
 ELNSSIEDLLEASMPSSDTTVTFKSEVAVLSPEKAENDDTYKDDVNHNQKCKEKMEA  
 EEEEEALAIAMAMSASQDALPIVPQLQVENGEDIIIIQQDTPETLPGHTKAKQPYREDTE  
 WLKGGQIGLGAFFSSCYQAQDVGTGLMAVKQVTVRNTSSEQEEVVEALREEIRM  
 MSHLNHPNIIRMLGATCEKSNYNLFIEWMAGGSVAHLLSKYGAFKESVVINYTEQLL  
 RGLSYLHENQIIHRDVKGANLLIDSTGQRLRIADFGAAARLASKGTGAGEFQGQLLG  
 TIAFMAPEVLRGQQYGRSCDVWSVGCAIEMACAKPPWNAEKHSNHLALIFKIASAT  
 TAPSIPSHLSPGLRDVALRCLELQPQDRPPSRELLKHPVFRTTWTRTRPLEQKLISEE  
 DLAANDILDYKDDDDKV

<b>Purity</b>	> 80% as determined by SDS-PAGE and Coomassie blue staining
<b>Stability</b>	Stable for 3 months from receipt of products under proper storage and handling conditions.
<b>Storage</b>	Store at -80 centigrade. Avoid repeated freeze-thaw cycles.
<b>Concentration</b>	50 µg/mL as determined by BCA

 Tel: 1-631-559-9269 1-516-512-3133

 Email: [info@creative-biomart.com](mailto:info@creative-biomart.com)  Fax: 1-631-938-8127

 45-1 Ramsey Road, Shirley, NY 11967, USA

**Storage Buffer** 100 mM glycine, 25 mM Tris-HCl, pH 7.3.

## GENE INFORMATION

**Gene Name** MAP3K1 mitogen-activated protein kinase kinase kinase 1 [ Homo sapiens (human) ]

**Official Symbol** MAP3K1

**Synonyms** MAP3K1; mitogen-activated protein kinase kinase kinase 1, E3 ubiquitin protein ligase; MEKK1, mitogen activated protein kinase kinase kinase 1; mitogen-activated protein kinase kinase kinase 1; MAPKKK1; MEKK; MEK kinase 1; MAP/ERK kinase kinase 1; MAPK/ERK kinase kinase 1; MEKK1; SRXY6; MEKK 1;

**Gene ID** 4214

**mRNA Refseq** NM\_005921

**Protein Refseq** NP\_005912

**MIM** 600982

**UniProt ID** Q13233

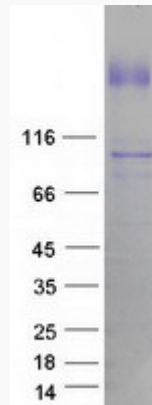
 Tel: 1-631-559-9269 1-516-512-3133

 Email: [info@creative-biomart.com](mailto:info@creative-biomart.com)  Fax: 1-631-938-8127

 45-1 Ramsey Road, Shirley, NY 11967, USA



SDS-PAGE



Tel: 1-631-559-9269 1-516-512-3133

Email: [info@creative-biomart.com](mailto:info@creative-biomart.com) Fax: 1-631-938-8127

45-1 Ramsey Road, Shirley, NY 11967, USA