

Active Recombinant Human MAP3K14 Protein, GST&His-tagged

Cat. No. MAP3K14-01H Lot. No. (See product label)

SPECIFICATION

Product Overview	Human MAP3K14 (NM_003954, 1 a.a. - 947 a.a.) full-length recombinant protein with GST-His tag was expressed in Sf9 cells.
Species	Human
Source	Insect Cells
ProteinLength	1-947 aa
Description	This gene encodes mitogen-activated protein kinase kinase kinase 14, which is a serine/threonine protein-kinase. This kinase binds to TRAF2 and stimulates NF-kappaB activity. It shares sequence similarity with several other MAPKK kinases. It participates in an NF-kappaB-inducing signalling cascade common to receptors of the tumour-necrosis/nerve-growth factor (TNF/NGF) family and to the interleukin-1 type-I receptor.
Form	Liquid
Bio-activity	1 pmol/μg x min
Molecular Mass	133.437
Applications	Functional Study SDS-PAGE

 Tel: 1-631-559-9269 1-516-512-3133

 Email: info@creative-biomart.com  Fax: 1-631-938-8127

 45-1 Ramsey Road, Shirley, NY 11967, USA

Stability	Aliquot to avoid repeated freezing and thawing.
Storage	Store at -80 centigrade.
Concentration	0.114 µg/µL
Storage Buffer	In 50 mM Hepes, 100 mM NaCl, pH 7.5. (5 mM DTT, 15 mM reduced glutathione, 20% glycerol)

GENE INFORMATION

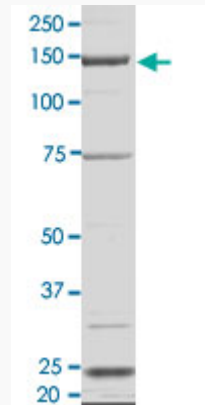
Gene Name	MAP3K14 mitogen-activated protein kinase kinase kinase 14 [Homo sapiens (human)]
Official Symbol	MAP3K14
Synonyms	MAP3K14; mitogen-activated protein kinase kinase kinase 14; HS; NIK; HSNIK; FTDCR1B; mitogen-activated protein kinase kinase kinase 14; NF-kappa-beta-inducing kinase; serine/threonine-protein kinase NIK; EC 2.7.11.25
Gene ID	9020
mRNA Refseq	NM_003954
Protein Refseq	NP_003945
MIM	604655
UniProt ID	Q99558

 Tel: 1-631-559-9269 1-516-512-3133

 Email: info@creative-biomart.com  Fax: 1-631-938-8127

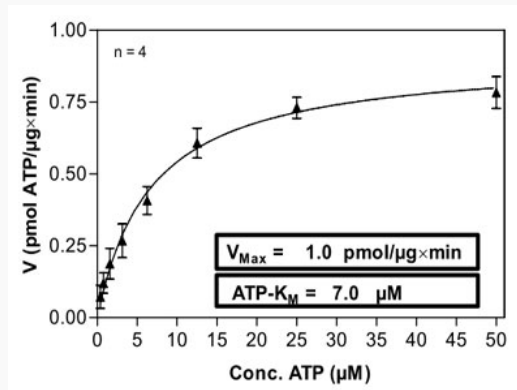
 45-1 Ramsey Road, Shirley, NY 11967, USA

Quality Control
Testing



2 µg/lane SDS-PAGE Stained with Coomassie Blue

Result of activity
analysis



Tel: 1-631-559-9269 1-516-512-3133

Email: info@creative-biomart.com Fax: 1-631-938-8127

45-1 Ramsey Road, Shirley, NY 11967, USA