

Recombinant Human MAP3K2, GST-tagged, Active

Cat. No. MAP3K2-351H Lot. No. (See product label)

SPECIFICATION

Product Overview	Recombinant full-length human MEKK2 was expressed by baculovirus in <i>Sf9</i> insect cells using an N-terminal GST tag. MW = 115 kDa.
Species	Human
Source	Sf9 Cells
Description	MEKK2 (also known as mitogen-activated protein kinase (MAPK) kinase kinase 2) is a major upstream activator of the JNK/MAPK cascade. MEKK2 can mediate in vitro phosphorylation of MKK4 and MKK7 which are key MAPKs that activate JNK. In addition, MEKK2 immunoprecipitates activated JUN in an IL1-dependent manner. Rheumatoid arthritis and osteoarthritis synovial tissues show high levels of MEKK2 indicating that it may be an important activator of the JNK pathway in arthritis. Endogenous MEKK2 is localized mainly in the cytosol of unstimulated cells.
Sequence	Full-length.
Applications	Kinase Assay, Western Blot.
Storage And Stability	Store product at -70°C. For optimal storage, aliquot target into smaller quantities after centrifugation and store at recommended temperature. For most favorable performance, avoid repeated handling and multiple freeze/thaw cycles.

GENE INFORMATION

 Tel: 1-631-559-9269 1-516-512-3133

 Email: info@creative-biomart.com  Fax: 1-631-938-8127

 45-1 Ramsey Road, Shirley, NY 11967, USA

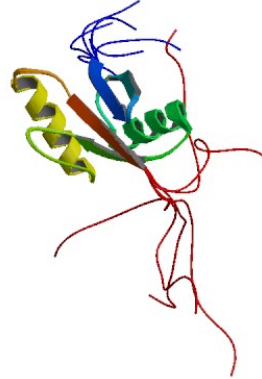
Gene Name	MAP3K2 mitogen-activated protein kinase kinase kinase 2 [Homo sapiens]
Synonyms	MAP3K2; mitogen-activated protein kinase kinase kinase 2; MEKK2; MEKK2B; MEK kinase 2; OTTHUMP00000203817; MAP/ERK kinase kinase 2; MAPK/ERK kinase kinase 2; EC 2.7.11.25; MAPKKK2; MEKK 2
Gene ID	10746
mRNA Refseq	NM_006609
Protein Refseq	NP_006600
MIM	609487
UniProt ID	Q9Y2U5
Chromosome Location	2q14.3
Pathway	Gap junction; GnRH signaling pathway; MAPK signaling pathway
Function	ATP binding; MAP kinase kinase kinase activity; magnesium ion binding; nucleotide binding; protein binding; protein serine/threonine kinase activity; transferase activity

 Tel: 1-631-559-9269 1-516-512-3133

 Email: info@creative-biomart.com  Fax: 1-631-938-8127

 45-1 Ramsey Road, Shirley, NY 11967, USA

PDB rendering based
on 2cu1.



 Tel: 1-631-559-9269 1-516-512-3133

 Email: info@creative-biomart.com  Fax: 1-631-938-8127

 45-1 Ramsey Road, Shirley, NY 11967, USA