

Recombinant Human MAP3K5 protein, His-tagged

Cat. No. MAP3K5-11H Lot. No. (See product label)

SPECIFICATION

Product Overview	Recombinant Human MAP3K5(Gly681~Glu936) fused with His tag at N-terminal was expressed in E. coli.
Species	Human
Source	E.coli
ProteinLength	Gly681~Glu936
Description	Mitogen-activated protein kinase (MAPK) signaling cascades include MAPK or extracellular signal-regulated kinase (ERK), MAPK kinase (MKK or MEK), and MAPK kinase kinase (MAPKKK or MEKK). MAPKK kinase/MEKK phosphorylates and activates its downstream protein kinase, MAPK kinase/MEK, which in turn activates MAPK. The kinases of these signaling cascades are highly conserved, and homologs exist in yeast, Drosophila, and mammalian cells. MAPKKK5 contains 1,374 amino acids with all 11 kinase subdomains. Northern blot analysis shows that MAPKKK5 transcript is abundantly expressed in human heart and pancreas. The MAPKKK5 protein phosphorylates and activates MKK4 (aliases SERK1, MAPKK4) in vitro, and activates c-Jun N-terminal kinase (JNK)/stress-activated protein kinase (SAPK) during transient expression in COS and 293 cells; MAPKKK5 does not activate MAPK/ERK.
Form	PBS, pH7.4, containing 0.01% SKL, 1mM DTT, 5% Trehalose and Proclin300
Molecular Mass	32.2kDa

 Tel: 1-631-559-9269 1-516-512-3133

 Email: info@creative-biomart.com  Fax: 1-631-938-8127

 45-1 Ramsey Road, Shirley, NY 11967, USA

Endotoxin	<1.0EU per 1g (determined by the LAL method)
Purity	> 95%
Applications	Positive Control; Immunogen; SDS-PAGE; WB. If bio-activity of the protein is needed, please check active protein.
Stability	The thermal stability is described by the loss rate. The loss rate was determined by accelerated thermal degradation test, that is, incubate the protein at 37 centigrade for 48h, and no obvious degradation and precipitation were observed. The loss rate is less than 5% within the expiration date under appropriate storage condition.
Storage	Avoid repeated freeze/thaw cycles. Store at 2-8 centigrade for one month. Aliquot and store at -80 centigrade for 12 months.
Reconstitution	Reconstitute in PBS or others.

GENE INFORMATION

Gene Name	MAP3K5 mitogen-activated protein kinase kinase kinase 5 [Homo sapiens]
Official Symbol	MAP3K5
Synonyms	MAP3K5; mitogen-activated protein kinase kinase kinase 5; MEKK5; apoptosis signal regulating kinase 1; ASK1; MAPKKK5; ASK-1; MEKK 5; MEK kinase 5; MAP/ERK kinase kinase 5; MAPK/ERK kinase kinase 5; apoptosis signal-regulating kinase 1;
Gene ID	4217
mRNA Refseq	NM_005923

 Tel: 1-631-559-9269 1-516-512-3133

 Email: info@creative-biomart.com  Fax: 1-631-938-8127

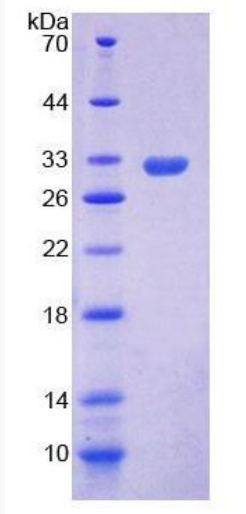
 45-1 Ramsey Road, Shirley, NY 11967, USA


Protein Refseq	NP_005914
MIM	602448
UniProt ID	Q99683
Chromosome Location	6q22.33
Pathway	Amyotrophic lateral sclerosis (ALS), organism-specific biosystem; Amyotrophic lateral sclerosis (ALS), conserved biosystem; Class I PI3K signaling events mediated by Akt, organism-specific biosystem; HIV-1 Nef: Negative effector of Fas and TNF-alpha, organism-specific biosystem; Insulin Signaling, organism-specific biosystem; MAPK signaling pathway, organism-specific biosystem; MAPK signaling pathway, organism-specific biosystem;
Function	ATP binding; MAP kinase kinase kinase activity; cysteine-type endopeptidase activator activity involved in apoptotic process; magnesium ion binding; nucleotide binding; protein binding; protein homodimerization activity; protein kinase activity; protein kinase binding; protein phosphatase binding; protein serine/threonine kinase activity;

 Tel: 1-631-559-9269 1-516-512-3133


 Email: info@creative-biomart.com  Fax: 1-631-938-8127

 45-1 Ramsey Road, Shirley, NY 11967, USA



 Tel: 1-631-559-9269 1-516-512-3133

 Email: info@creative-biomart.com  Fax: 1-631-938-8127

 45-1 Ramsey Road, Shirley, NY 11967, USA