

Recombinant Human MAP3K5, GST-tagged, Active

Cat. No. MAP3K5-245H Lot. No. (See product label)

SPECIFICATION

Product Overview	Recombinant human ASK1(649-946) was expressed by baculovirus in <i>Sf9 insect cell</i> using a N-terminal GST tag. MW = 60 kDa.
Species	Human
Source	Sf9 Cells
Protein Length	649-946 a.a.
Description	ASK1, also known as MAPKKK5, activates MKK3, MKK4 (SEK1), and MKK6. Overexpression of ASK1 induces apoptotic cell death, and ASK1 is activated in cells treated with tumor necrosis factor-alpha. ASK1 interacts with members of the TRAF family and is activated by TRAF2 in the TNF-signaling pathway. After activation by TRAF2, ASK1 activates MKK4, which in turn activates JNK. Thus, ASK1 is a mediator of TRAF2-induced JNK activation.
Sequence	Full-length.
Applications	Kinase Assay, Western Blot.
Storage And Stability	Store product at -70°C . For optimal storage, aliquot target into smaller quantities after centrifugation and store at recommended temperature. For most favorable performance, avoid repeated handling and multiple freeze/thaw cycles.

GENE INFORMATION

 Tel: 1-631-559-9269 1-516-512-3133

 Email: info@creative-biomart.com  Fax: 1-631-938-8127

 45-1 Ramsey Road, Shirley, NY 11967, USA

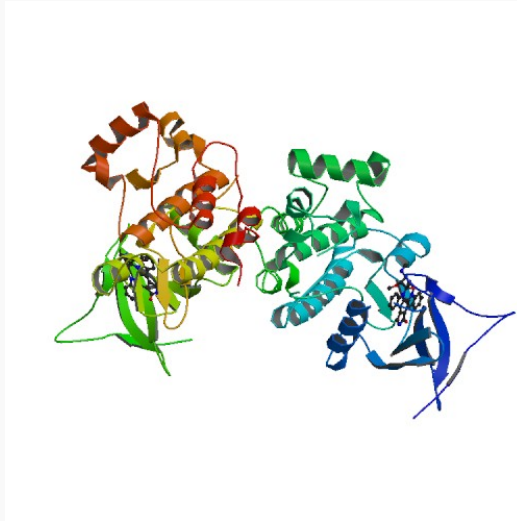
Gene Name	MAP3K5 mitogen-activated protein kinase kinase kinase 5 [Homo sapiens]
Synonyms	mitogen-activated protein kinase kinase kinase 5; ASK1; MEKK5; MAPKKK5; MAP3K5; MAP/ERK kinase kinase 5; MAPK/ERK kinase kinase 5; apoptosis signal regulating kinase 1; ASK-1; EC 2.7.11.25; OTTHUMP00000017275; Apoptosis signal-regulating kinase 1; MEK kinase 5
Gene ID	4217
mRNA Refseq	NM_005923
Protein Refseq	NP_005914
MIM	602448
UniProt ID	Q99683
Chromosome Location	6q22.33
Pathway	Amyotrophic lateral sclerosis (ALS); MAPK signaling pathway; Neurotrophin signaling pathway
Function	MAP kinase kinase kinase activity; protein serine/threonine kinase activity; protein homodimerization activity; ATP binding; caspase activator activity; magnesium ion binding; nucleotide binding; transferase activity

 Tel: 1-631-559-9269 1-516-512-3133

 Email: info@creative-biomart.com  Fax: 1-631-938-8127

 45-1 Ramsey Road, Shirley, NY 11967, USA

PDB rendering based
on 2clq.



 Tel: 1-631-559-9269 1-516-512-3133

 Email: info@creative-biomart.com  Fax: 1-631-938-8127

 45-1 Ramsey Road, Shirley, NY 11967, USA