

Recombinant Full Length Human MAP3K5 Protein, C-Flag-tagged

Cat. No. MAP3K5-361HFL **Lot. No.** (See product label)

SPECIFICATION

Product Overview	Recombinant Full Length Human MAP3K5 Protein, fused to Flag-tag at C-terminus, was expressed in Mammalian cells.
Species	Human
Source	Mammalian Cells
Description	Mitogen-activated protein kinase (MAPK) signaling cascades include MAPK or extracellular signal-regulated kinase (ERK), MAPK kinase (MKK or MEK), and MAPK kinase kinase (MAPKKK or MEKK). MAPKK kinase/MEKK phosphorylates and activates its downstream protein kinase, MAPK kinase/MEK, which in turn activates MAPK. The kinases of these signaling cascades are highly conserved, and homologs exist in yeast, Drosophila, and mammalian cells. MAPKKK5 contains 1,374 amino acids with all 11 kinase subdomains. Northern blot analysis shows that MAPKKK5 transcript is abundantly expressed in human heart and pancreas. The MAPKKK5 protein phosphorylates and activates MKK4 (aliases SERK1, MAPKK4) in vitro, and activates c-Jun N-terminal kinase (JNK)/stress-activated protein kinase (SAPK) during transient expression in COS and 293 cells; MAPKKK5 does not activate MAPK/ERK.
Form	25 mM Tris HCl, pH 7.3, 100 mM glycine, 10% glycerol.
Molecular Mass	154.4 kDa
AA Sequence	MSTEADEGITFSVPPFAPSGFCTIPEGGICRRGGAAAVGEGEEHQLPPPPPGSFWN

 Tel: 1-631-559-9269 1-516-512-3133

 Email: info@creative-biomart.com  Fax: 1-631-938-8127

 45-1 Ramsey Road, Shirley, NY 11967, USA



VESAAAPGIGCPAA TSSSSATRGRGSSVGGGSRRTTVAYVINEASQGQLVVAESEA
LQSLREACETVGATLETLHFGKLDGET TVLDRFYNADIADVEMSDAFRQPSLFYHL
GVRESFSMANNIILYCDTNSDSLQSLKEIICQKNTMCTGNY TFVPYMITPHNKVYCC
DSSFMKGLTELMQPNFELLGPICLPLVDRFIQLLKVAQASSSQYFRESILNDI RKAR
NLYTGKELAAELARIRQRVDNIEVLTADIVINLLL SYRDIQDYDSIVKLVETLEKLPTFDL
ASHHH VKFHAFALNRRNLPGDRAKALDIMIPMVQSEGQVASDMYCLVGRIYKDMF
LDSNFTDTESRDHGASWFK KAFESEPTLQSGINYAVLLLAAGHQFESSFELRKVGV
KLSSLLGKKGNLEKLQSYWEVGFLLGASVLAND HMRVIQASEKLFKLTTPAWYLKSI
VETILYKHFVKLTTEQPVAKQELVDFWMDLVEATKTDVTVVFRP VLILEPTKIYQPS
YLSINNEVEEKTISIWHVLPDDKKGIHEWNFSASSVRGVSISKFEERCCFLYVLHNS D
DFQIYFCTELHCKKFFEMVNTITEEKGRSTEEGDCESDLLEYDYEDENGDRVVLGK
GTYGIVYAGRDL SNQVRIAIKEIPERDSRYSQPLHEEIALHKHLKHNIVQYLGSE
NGFIKIFMEQVPGGSL SALLRSKW GPLKDNEQTIGFYTKQILEGLKYLHDNQIVHRDI
KGDNLINTYSGVLKISDFGTSKRLAGINPCTETFT GTLQYMAPEIIDKGPRGYGKAA
DIWSLGCTIEMATGKPPFYELGEPQAAMFKVGMFKVHPEIPESMSAE AKAFILKCFE
PDPDKRACANDLLVDEFLKVSSKKKKTKPKLSALSAGSNEYLRISLPPVPLVEDTSS
SS EYGSVSPDTELKVDPFSFKTRAKSCGERDVKGIRTLFLGIPDENFEDHSAPPSPE
EKDSGFFMLRKDSER RATLHRILTEDQDKIVRNLMESLAQGAEKPKLWEHITLIAS
LREFVIRSTDRKIIATTL SKLLELDFD SHGISQVQVVLFGFQDAVNKVLNRHNKPHW
MFALDSIIRKAVQTAITILVPELRPHFSLASESDTADQE DLDVEDDHEEQPSNQTVRR
PQAVIEDAVATSGVSTLSSTVSHDSQSAHRSLNVQLGRMKIETNRLLLEELV RKEKEL
QALLHRAIEEKDQEIHLKLSQPIEIPELPVFHLNSSGTNTEDSELTDWLRVNGADE
DTISRF
LAEDYTLLDVLYYVTRDDLKCLRLRGGMLCTLWKAIDFRNKQTRTRTRPLEQKLISEE
DLAANDILDYKDDDDKV

Purity > 80% as determined by SDS-PAGE and Coomassie blue staining.

Stability Stable for 12 months from the date of receipt of the product under proper storage and handling conditions. Avoid repeated freeze-thaw cycles.

Tel: 1-631-559-9269 1-516-512-3133

Email: info@creative-biomart.com Fax: 1-631-938-8127

45-1 Ramsey Road, Shirley, NY 11967, USA

Storage	Store at -80 centigrade.
Concentration	>50 ug/mL as determined by microplate BCA method.
Preparation	Recombinant protein was captured through anti-DDK affinity column followed by conventional chromatography steps.
Protein Families	Druggable Genome, Protein Kinase
Protein Pathways	Amyotrophic lateral sclerosis (ALS), MAPK signaling pathway, Neurotrophin signaling pathway
Full Length	Full L.

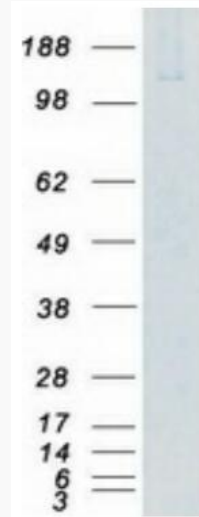
GENE INFORMATION

Gene Name	MAP3K5 mitogen-activated protein kinase kinase kinase 5 [Homo sapiens (human)]
Official Symbol	MAP3K5
Synonyms	ASK1; MEKK5; MAPKKK5
Gene ID	4217
mRNA Refseq	NM_005923.4
Protein Refseq	NP_005914.1
MIM	602448
UniProt ID	Q99683

 Tel: 1-631-559-9269 1-516-512-3133

 Email: info@creative-biomart.com  Fax: 1-631-938-8127

 45-1 Ramsey Road, Shirley, NY 11967, USA



Coomassie blue staining of purified MAP3K5 protein.

 Tel: 1-631-559-9269 1-516-512-3133

 Email: info@creative-biomart.com  Fax: 1-631-938-8127

 45-1 Ramsey Road, Shirley, NY 11967, USA