

Recombinant Human MAP3K5 protein, GST-tagged

Cat. No. MAP3K5-7846H Lot. No. (See product label)

SPECIFICATION

Product Overview	Recombinant Human MAP3K5 protein(1180-1374 aa), fused with N-terminal GST tag, was expressed in E.coli.
Species	Human
Source	E.coli
ProteinLength	1180-1374 aa
Form	The purified protein was lyophilized from sterile phosphate-buffered saline (PBS: 58 mM Na ₂ HPO ₄ , 17 mM NaH ₂ PO ₄ , 68 mM NaCl, pH 8.0). Prior to lyophilization, 5% (w/v) trehalose and 5% (w/v) mannitol were incorporated as cryoprotective excipients.
AASequence	LASESDTADQEDLDVEDDHHEEQPSNQTVRRPQAVIEDAVATSGVSTLSSTVSHDSQ SAHRSLNVQLGRMKIETNRLLEELVRKEKELQALLHRAIEEKDQEIKHLKLKSQPIEIP ELPVFHLNSSGTNTEDSELTDWLRVNGAEDTISRFLAEDYLLDVLYYVTRDDLKC LRLRGGMLCTLWKAIDFRNKQT
Purity	85%, by SDS-PAGE with Coomassie Brilliant Blue staining.
Storage	Store at 2-8°C for 1-2 weeks. Aliquot and store at -20°C to -80°C for up to 3 months, reconstitution with sterile water and addition of an equal volume of glycerol. Avoid repeat freeze-thaw cycles.

 Tel: 1-631-559-9269 1-516-512-3133

 Email: info@creative-biomart.com  Fax: 1-631-938-8127

 45-1 Ramsey Road, Shirley, NY 11967, USA

Reconstitution

Dissolve the product in 200 µl sterile water to achieve a working concentration of 0.25 g/µl. If experimental compatibility allows, mix the aqueous solution with an equal volume of glycerol (1:1 ratio) after initial reconstitution.

GENE INFORMATION**Gene Name**

MAP3K5 mitogen-activated protein kinase kinase kinase 5 [Homo sapiens]

Official Symbol

MAP3K5

Synonyms

MAP3K5; mitogen-activated protein kinase kinase kinase 5; MEKK5; apoptosis signal regulating kinase 1; ASK1; MAPKKK5; ASK-1; MEKK 5; MEK kinase 5; MAP/ERK kinase kinase 5; MAPK/ERK kinase kinase 5; apoptosis signal-regulating kinase 1;

Gene ID

4217

mRNA Refseq

NM_005923

Protein Refseq

NP_005914

MIM

602448

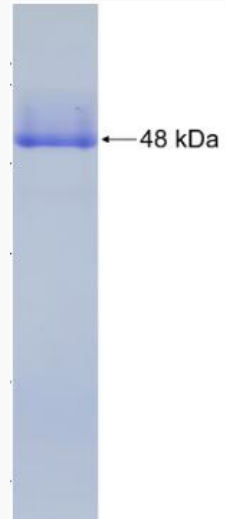
UniProt ID

Q99683

 Tel: 1-631-559-9269 1-516-512-3133 Email: info@creative-biomart.com  Fax: 1-631-938-8127 45-1 Ramsey Road, Shirley, NY 11967, USA



SDS-PAGE



Tel: 1-631-559-9269 1-516-512-3133

Email: info@creative-biomart.com Fax: 1-631-938-8127

45-1 Ramsey Road, Shirley, NY 11967, USA