

Recombinant Monkey MAP4K1 Protein, C-His tagged

Cat. No. MAP4K1-03M Lot. No. (See product label)

SPECIFICATION

Product Overview	Recombinant Monkey MAP4K1 Protein with C-His tag was expressed in Insect cells.
Species	Monkey
Source	Insect Cells
Description	Enables ATP binding activity and MAP kinase kinase kinase activity. Involved in several processes, including JNK cascade; cellular response to phorbol 13-acetate 12-myristate; and protein phosphorylation. Located in membrane.
Molecular Mass	The protein has a calculated MW of 34.49 kDa.
AA Sequence	GSATMLLVNQSHQGPFNKEHTSKMVSAIVLYVLLAAAAHSAFAPRDHYDLLQRLGGG TYGEVFKARDKASGDLVALKMKMEPDDDVSTLQKEILILKTCRHANIVAYHGSYLW LQKLWICMEFCGAGSLQDIYQVTGSLSELQISYVCREVLQGLAYLHSQKKIHRDIKGA NILVNDAGEVRLADFGISAQIGATLARRLSFIGTPYWMAPEVAVALKGGYNELCDIW SLGITAIELAELQPPLFDVHPLRVLFMTKSGYQPPRLKEKGKWSAAFHNFIKVTLT SPKKRPSATKMLSHQLVHHHHHH
Purity	> 60% by SDS-PAGE
Storage	Store it at -20 to -80 centigrade. It is recommended that the protein be aliquoted for optimal storage. Avoid repeated freeze-thaw cycles.
Concentration	0.2 mg/mL

 Tel: 1-631-559-9269 1-516-512-3133

 Email: info@creative-biomart.com  Fax: 1-631-938-8127

 45-1 Ramsey Road, Shirley, NY 11967, USA

Storage Buffer PBS, pH 7.4

GENE INFORMATION

Gene Name MAP4K1 mitogen-activated protein kinase kinase kinase kinase 1 [*Macaca mulatta*]

Official Symbol MAP4K1

Synonyms MAP4K1; mitogen-activated protein kinase kinase kinase kinase 1;

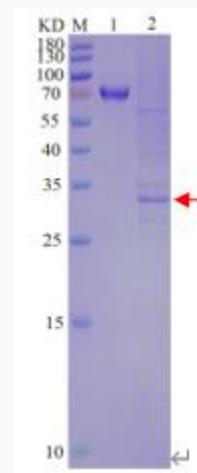
Gene ID 694259

mRNA Refseq XM_028840014

Protein Refseq XP_028695847

UniProt ID A0A1D5R952

**SDS-PAGE analysis
of purified protein**



M: Protein ladder

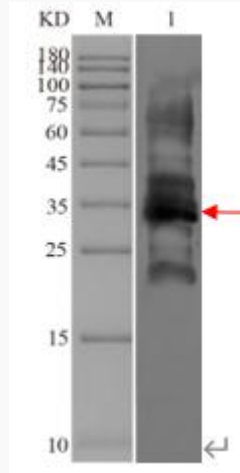
 Tel: 1-631-559-9269 1-516-512-3133

 Email: info@creative-biomart.com  Fax: 1-631-938-8127

 45-1 Ramsey Road, Shirley, NY 11967, USA

1: BSA
2: Purified protein

WB analysis of
purified protein



M: Protein ladder
1: Purified protein

 Tel: 1-631-559-9269 1-516-512-3133

 Email: info@creative-biomart.com  Fax: 1-631-938-8127

 45-1 Ramsey Road, Shirley, NY 11967, USA