

Recombinant Dog MAP4K1 Protein, GST tagged

Cat. No. MAP4K1-04D Lot. No. (See product label)

SPECIFICATION

Product Overview	Recombinant Dog MAP4K1 Protein with GST tag was expressed in Baculovirus-Insect Cells.
Species	Dog
Source	Insect Cells
Description	Enables ATP binding activity and MAP kinase kinase kinase activity. Involved in several processes, including JNK cascade; cellular response to phorbol 13-acetate 12-myristate; and protein phosphorylation. Located in membrane.
Molecular Mass	The protein has a calculated MW of 54 kDa.
AA Sequence	MSPILGYWKIKGLVQPTRLLEYLEEKYEEHLYERDEGDKWRNKKFELGLEFPNLPY YIDGDVKLTQSMARIYIADKHNMLGGCPKERAEISMLEGAVLDIRYGVSR IAYSKDFE TLKVDFLSKLPEMLKMFEDRLCHKTYLNGDHVTHPDFMLYDALDVVLYMDPMCLDA FPKLVCFKKRIEAIQIDKYLKSSKYIAWPLQG WQATFGGGDHPPKMPRDHYDLLQR LGGGT YGEVFKARDKVTGDLVAVKMKMEPDDDVSTLQKEILILKTCR HANIVAYHG SYLWLQKFWICMEFCGAGSLQDIYQVTGPLSELQISYVCREVLQGLAYLHSQKKIHR DIKGANILINDAGEVRLADFGISAQIGATLARRLSFIGTPYWM APEVA AVALKGGYNEL CDIWSLGITAI ELAELQPPLFDVHPLRVFLMTKSGYQPPRLKEKGKWSAAFHNFVKV TLTKNPKKRPCATKMLSHQLV
Purity	> 90% by SDS-PAGE

 Tel: 1-631-559-9269 1-516-512-3133

 Email: info@creative-biomart.com  Fax: 1-631-938-8127

 45-1 Ramsey Road, Shirley, NY 11967, USA

Storage	Store it under sterile conditions at -20 to -80 centigrade. It is recommended that the protein be aliquoted for optimal storage. Avoid repeated freeze-thaw cycles.
Concentration	0.174 mg/mL
Storage Buffer	Sterile PBS, 10 mM GSH, pH 7.4

GENE INFORMATION

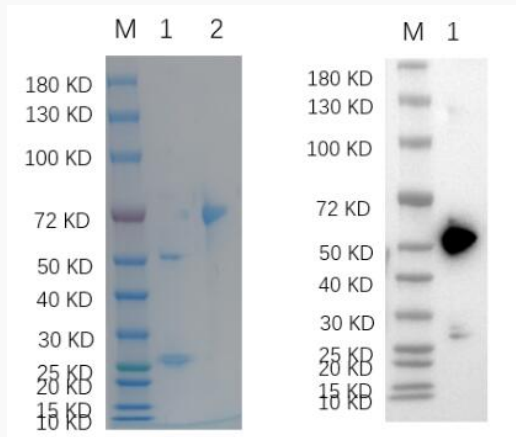
Gene Name	MAP4K1 mitogen-activated protein kinase kinase kinase kinase 1 [<i>Canis lupus familiaris</i>]
Official Symbol	MAP4K1
Synonyms	MAP4K1; mitogen-activated protein kinase kinase kinase kinase 1;
Gene ID	484527
mRNA Refseq	XM_038657074
Protein Refseq	XP_038513002
UniProt ID	A0A8C0KYS1

 Tel: 1-631-559-9269 1-516-512-3133

 Email: info@creative-biomart.com  Fax: 1-631-938-8127

 45-1 Ramsey Road, Shirley, NY 11967, USA

**Reducing 12% SDS-
PAGE (CBB stained)
and WB (Anti-GST
Mouse Monoclonal
Antibody) analysis
profile of purified
MAP4K1.**



1. MAP4K1-04D
2. BSA

 Tel: 1-631-559-9269 1-516-512-3133

 Email: info@creative-biomart.com  Fax: 1-631-938-8127

 45-1 Ramsey Road, Shirley, NY 11967, USA