

## Recombinant Rat MAP4K1 Protein, C-His tagged

Cat. No. MAP4K1-05R Lot. No. (See product label)

### SPECIFICATION

<b>Product Overview</b>	Recombinant Rat MAP4K1 Protein with C-His tag was expressed in Insect cells.
<b>Species</b>	Rat
<b>Source</b>	Insect Cells
<b>Description</b>	Predicted to enable ATP binding activity and MAP kinase kinase kinase kinase activity. Predicted to be involved in several processes, including JNK cascade; cellular response to phorbol 13-acetate 12-myristate; and protein phosphorylation. Used to study transient cerebral ischemia. Orthologous to human MAP4K1 (mitogen-activated protein kinase kinase kinase kinase 1).
<b>Molecular Mass</b>	The protein has a calculated MW of 34.1 kDa.
<b>AA Sequence</b>	GSATMLLVNQSHQGFNKEHTSKMVSAIVLYVLLAAAAHSAFAYDLLQRLGGGTYGE VFKARDKVS KDLVALKMVKMEPDDDSTLQKEILMLKSCRHANIVAYHGSYLWLQKL WICMEFCGAGSLQDIYQVTGSLSELQISYVCREVLQGLAYLHSQKKIHRDIKGANILIN DSGEVKLADFGISAQIGATLARRLSFIGTPYWMAPEVAAVALKGGYNELCDIWSLGIT AIELAELQPPLFDVHPLRVLFLMTKSGYQPRLKEKGKWSSSFHNFVKVTLTKNSKK RPSATKMLSHQLVHHHHHH
<b>Purity</b>	> 70% by SDS-PAGE
<b>Storage</b>	Store it at -20 to -80 centigrade. It is recommended that the protein be aliquoted for optimal storage. Avoid repeated freeze-thaw cycles.

 Tel: 1-631-559-9269 1-516-512-3133

 Email: [info@creative-biomart.com](mailto:info@creative-biomart.com)  Fax: 1-631-938-8127

 45-1 Ramsey Road, Shirley, NY 11967, USA

**Concentration** 0.05 mg/mL

**Storage Buffer** PBS, pH 7.4

## GENE INFORMATION

**Gene Name** Map4k1 mitogen activated protein kinase kinase kinase 1 [ Rattus norvegicus ]

**Official Symbol** MAP4K1

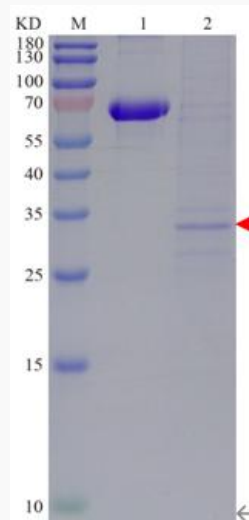
**Synonyms** MAP4K1; mitogen activated protein kinase kinase kinase 1; mitogen-activated protein kinase kinase kinase 1;

**Gene ID** 292763

**mRNA Refseq** NM\_001106243

**Protein Refseq** NP\_001099713

**SDS-PAGE analysis  
of purified protein**



Tel: 1-631-559-9269 1-516-512-3133

Email: [info@creative-biomart.com](mailto:info@creative-biomart.com) Fax: 1-631-938-8127

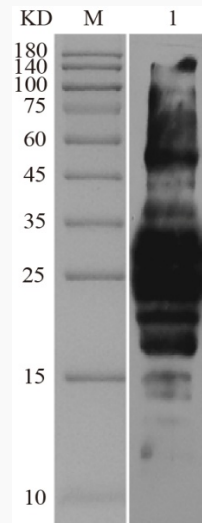
45-1 Ramsey Road, Shirley, NY 11967, USA

M: Protein ladder

1: BSA

2: Purified protein

**WB analysis of  
purified protein**



M: Protein ladder

1: Purified protein

 Tel: 1-631-559-9269 1-516-512-3133

 Email: [info@creative-biomart.com](mailto:info@creative-biomart.com)  Fax: 1-631-938-8127

 45-1 Ramsey Road, Shirley, NY 11967, USA