

Active Recombinant Full Length Human MAP4K2 Protein, GST-tagged

Cat. No. MAP4K2-9444HF **Lot. No.** (See product label)

SPECIFICATION

Product Overview	Full-length human MAP4K2 [1-820(end) amino acid of accession number NP_004570.2] was expressed as N-terminal GST-fusion protein (119 kDa) using baculovirus expression system. GST-MAP4K2 was purified by using glutathione sepharose chromatography
Species	Human
Source	Sf21 Cells
ProteinLength	1-820
Form	50 mM Tris-HCl, 150 mM NaCl, 0.05% Brij35, 1 mM DTT, 10% glycerol, pH7.5
Bio-activity	The activity was measured by off-chip mobility shift assay. The enzyme was incubated with fluorescence-labeled substrate and Mg(or Mn)/ATP. The phosphorylated and unphosphorylated substrates were separated and detected by LabChip™3000.
Purity	92%
Applications	SDS-PAGE
Storage	Store at -80C. Avoid repeating freeze-thaws.

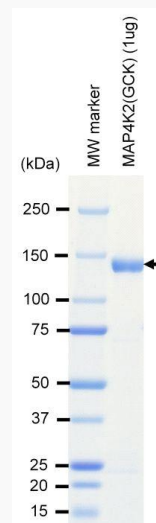
 Tel: 1-631-559-9269 1-516-512-3133

 Email: info@creative-biomart.com  Fax: 1-631-938-8127

 45-1 Ramsey Road, Shirley, NY 11967, USA

GENE INFORMATION

Gene Name	mitogen-activated protein kinase kinase kinase kinase 2
Official Symbol	MAP4K2
Synonyms	MAP4K2;BL44;GCK;RAB8IP
Protein Refseq	NP_004570.2
UniProt ID	Q12851

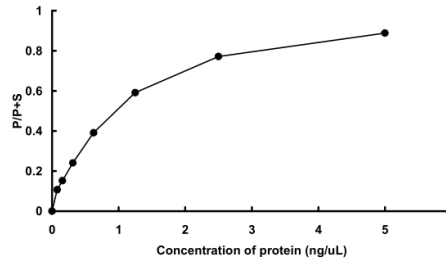
SDS-PAGE

The purity was assessed by SDS-PAGE/CBB staining.

 Tel: 1-631-559-9269 1-516-512-3133

 Email: info@creative-biomart.com  Fax: 1-631-938-8127

 45-1 Ramsey Road, Shirley, NY 11967, USA

Activity data**Activity data**

The activity was measured by off-chip mobility shift assay. The enzyme was incubated with fluorescence-labeled substrate and Mg(or Mn)/ATP. The phosphorylated and unphosphorylated substrates were separated and detected by LabChip™3000.

 Tel: 1-631-559-9269 1-516-512-3133

 Email: info@creative-biomart.com  Fax: 1-631-938-8127

 45-1 Ramsey Road, Shirley, NY 11967, USA