

Recombinant Human MAP4K3 protein, His-tagged

Cat. No. MAP4K3-7319H Lot. No. (See product label)

SPECIFICATION

Product Overview	Recombinant Human MAP4K3 protein(345-515 aa), fused with N-terminal His tag, was expressed in E.coli.
Species	Human
Source	E.coli
ProteinLength	345-515 aa
Form	The purified protein was lyophilized from sterile phosphate-buffered saline (PBS: 58 mM Na ₂ HPO ₄ , 17 mM NaH ₂ PO ₄ , 68 mM NaCl, pH 7.4). Prior to lyophilization, 5% (w/v) trehalose and 5% (w/v) mannitol were incorporated as cryoprotective excipients.
AASequence	ETEPHHELDLQLEYGQGHQGGYFLGANKSLLKSVEEELHQRGHVAHLEDDEGDDD ESKHSTLKAKIPPLPPKPKSIFIPQEMHSTEDENQGTIKRCPMSGSPAKPSQVPPRP PPRLLPPHKPVALGNGMSSFQLNGERDGSQCQQNEHRGTNLSRKEKKDVPKPIS NGL
Storage	Store at 2-8°C for 1-2 weeks. Aliquot and store at -20°C to -80°C for up to 3 months, reconstitution with sterile water and addition of an equal volume of glycerol. Avoid repeat freeze-thaw cycles.
Reconstitution	Dissolve the product in 200 µl sterile water to achieve a working concentration of 0.25 g/

 Tel: 1-631-559-9269 1-516-512-3133

 Email: info@creative-biomart.com  Fax: 1-631-938-8127

 45-1 Ramsey Road, Shirley, NY 11967, USA

µl. If experimental compatibility allows, mix the aqueous solution with an equal volume of glycerol (1:1 ratio) after initial reconstitution.

GENE INFORMATION

Gene Name	MAP4K3 mitogen-activated protein kinase kinase kinase kinase 3 [Homo sapiens]
Official Symbol	MAP4K3
Synonyms	MAP4K3; mitogen-activated protein kinase kinase kinase kinase 3; RAB8IPL1; GLK; MAPKKKK3; MEK kinase kinase 3; MAPK/ERK kinase kinase kinase 3; germinal center kinase-like kinase; germinal center kinase-related protein kinase; MEKKK 3;
Gene ID	8491
mRNA Refseq	NM_003618
Protein Refseq	NP_003609
MIM	604921
UniProt ID	Q8IVH8

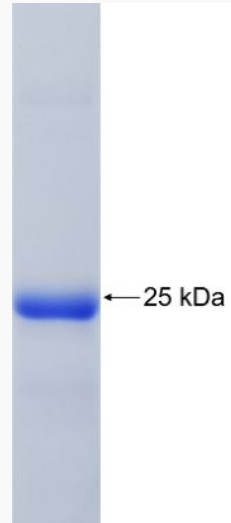
 Tel: 1-631-559-9269 1-516-512-3133

 Email: info@creative-biomart.com  Fax: 1-631-938-8127

 45-1 Ramsey Road, Shirley, NY 11967, USA



SDS-PAGE



Tel: 1-631-559-9269 1-516-512-3133

Email: info@creative-biomart.com Fax: 1-631-938-8127

45-1 Ramsey Road, Shirley, NY 11967, USA