

Recombinant Human MAP4K3 protein, His-tagged

Cat. No. MAP4K3-738H Lot. No. (See product label)

SPECIFICATION

Product Overview	Recombinant Human MAP4K3 protein(537-873 aa), fused with N-terminal His tag, was expressed in E.coli.
Species	Human
Source	E.coli
ProteinLength	537-873 aa
Form	The purified protein was lyophilized from sterile phosphate-buffered saline (PBS: 58 mM Na ₂ HPO ₄ , 17 mM NaH ₂ PO ₄ , 68 mM NaCl, pH 7.4). Prior to lyophilization, 5% (w/v) trehalose and 5% (w/v) mannitol were incorporated as cryoprotective excipients.
AASequence	KIHCASSWINPDTRDQYLIFGAEEGIYTLNLNELHETSMEQLFPRRCTWLYVMNCL LSISGKASQLYSHNLPGLFDYARQMQLPVAIPAHKLPDRILPRKFSVSAKIPETKWC QKCCVVRNPYTGHKYLCGALQTSIVLLEWVEPMQKFMLIKHIDFPIPCPLRMFEMLV VPEQEYPLVCVGVSRGRDFNQVRFETVNPNSTSSWFTESDTPQTNVTHVTQLER DTILVCLDCCIKIVNLQGRLKSSRKLSELTFDFQIESIVCLQDSVLAFWKHGMQGRS FRSNEVTQEISDSTRIFRLLGSDRVVLESRPTDNPTANSNLYILAGHENSY
Purity	85%, by SDS-PAGE with Coomassie Brilliant Blue staining.
Storage	Store at 2-8°C for 1-2 weeks. Aliquot and store at -20°C to -80°C for up to 3 months, reconstitution with sterile water and addition of an equal volume of glycerol. Avoid

 Tel: 1-631-559-9269 1-516-512-3133

 Email: info@creative-biomart.com  Fax: 1-631-938-8127

 45-1 Ramsey Road, Shirley, NY 11967, USA

repeat freeze-thaw cycles.

Reconstitution

Dissolve the product in 200 µl sterile water to achieve a working concentration of 0.25 g/µl. If experimental compatibility allows, mix the aqueous solution with an equal volume of glycerol (1:1 ratio) after initial reconstitution.

GENE INFORMATION

Gene Name [MAP4K3 mitogen-activated protein kinase kinase kinase 3 \[Homo sapiens \]](#)

Official Symbol [MAP4K3](#)

Synonyms MAP4K3; mitogen-activated protein kinase kinase kinase 3; RAB8IPL1; GLK; MAPKKKK3; MEK kinase kinase 3; MAPK/ERK kinase kinase kinase 3; germinal center kinase-like kinase; germinal center kinase-related protein kinase; MEKKK 3;

Gene ID [8491](#)

mRNA Refseq [NM_003618](#)

Protein Refseq [NP_003609](#)

MIM [604921](#)

UniProt ID [Q8IVH8](#)

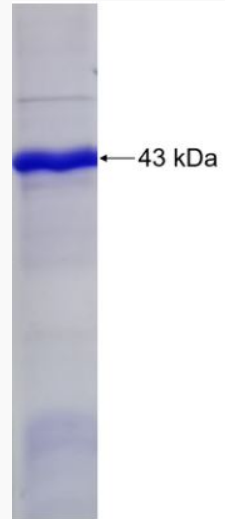
 Tel: 1-631-559-9269 1-516-512-3133

 Email: info@creative-biomart.com  Fax: 1-631-938-8127

 45-1 Ramsey Road, Shirley, NY 11967, USA



SDS-PAGE



Tel: 1-631-559-9269 1-516-512-3133

Email: info@creative-biomart.com Fax: 1-631-938-8127

45-1 Ramsey Road, Shirley, NY 11967, USA