

## Active Recombinant Human MAPK1 protein, GST-tagged

Cat. No. MAPK1-2577H Lot. No. (See product label)

### SPECIFICATION

<b>Product Overview</b>	Recombinant Human ERK2/MAPK1 Protein is produced by E. coli expression system. The target protein is expressed with sequence (Met1-Ser360) of human MAPK1 (Accession #NP_002736.3) fused with a GST tag at the N-terminus.
<b>Species</b>	Human
<b>Source</b>	E.coli
<b>ProteinLength</b>	Met1-Ser360
<b>Form</b>	Supplied in 50mM Tris150mM NaCl0.1mM EDTA0.25mM DTT0.1mM AEBSF25%glycerol10mM GSHpH 8.0.Contact us for customized product form or formulation.
<b>Bio-activity</b>	1.Measured by its binding ability in a functional ELISA. Immobilized Human MAPK1 Protein at 1µg/mL (100 µL/well) can bind ERK1/2 Rabbit mAb with a linear range of 0.017-4.92 ng/mL.
<b>Molecular Mass</b>	66 kDa
<b>Purity</b>	> 70% by SDS-PAGE.
<b>Storage</b>	Store the lyophilized protein at -20°C to -80 °C for long term. After reconstitution, the protein solution is stable at -20 °C for 3 months, at 2-8 °C for up to 1 week.

 Tel: 1-631-559-9269 1-516-512-3133

 Email: [info@creative-biomart.com](mailto:info@creative-biomart.com)  Fax: 1-631-938-8127

 45-1 Ramsey Road, Shirley, NY 11967, USA

**Reconstitution** Reconstitute to a concentration of 0.1-0.5 mg/mL in sterile distilled water.

## GENE INFORMATION

**Gene Name** MAPK1 mitogen-activated protein kinase 1 [ Homo sapiens ]

**Official Symbol** MAPK1

**Synonyms** MAPK1; mitogen-activated protein kinase 1; PRKM1, PRKM2; ERK; ERK2; MAPK2; p41mapk; ERK-2; MAPK 2; p42-MAPK; MAP kinase 1; MAP kinase 2; MAP kinase isoform p42; protein tyrosine kinase ERK2; mitogen-activated protein kinase 2; extracellular signal-regulated kinase 2; p38; p40; p41; ERT1; PRKM1; PRKM2; P42MAPK;

**Gene ID** 5594

**mRNA Refseq** NM\_002745

**Protein Refseq** NP\_002736

**MIM** 176948

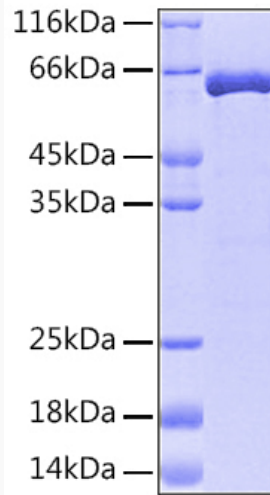
**UniProt ID** P28482

 Tel: 1-631-559-9269 1-516-512-3133

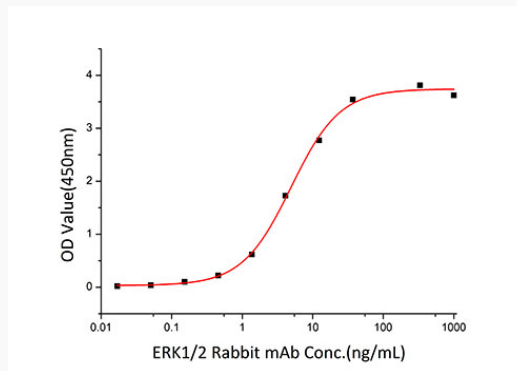
 Email: [info@creative-biomart.com](mailto:info@creative-biomart.com)  Fax: 1-631-938-8127

 45-1 Ramsey Road, Shirley, NY 11967, USA

**SDS-PAGE**



**Bio-activity**



 Tel: 1-631-559-9269 1-516-512-3133

 Email: [info@creative-biomart.com](mailto:info@creative-biomart.com)  Fax: 1-631-938-8127

 45-1 Ramsey Road, Shirley, NY 11967, USA