

Recombinant Human MAPK1 protein, GST-tagged

Cat. No. MAPK1-7267H Lot. No. (See product label)

SPECIFICATION

Product Overview	Recombinant Human MAPK1 protein(NP_002736.3) (Met 1-Ser 360) was expressed in Insect Cells, fused with the GST tag at the N-terminus.
Species	Human
Source	Insect Cells
ProteinLength	1-360 aa
Form	Lyophilized from sterile 50mM Tris, 100mM NaCl, 0.5mM PMSF, 10% Glycerol, pH 8.0.
Molecular Mass	The recombinant human ERK2/GST chimera consists of 585 amino acids and predicts a molecular mass of 67 kDa as estimated in SDS-PAGE under reducing conditions.
Endotoxin	< 1.0 EU per µg of the protein as determined by the LAL method.
Purity	> 98 % as determined by SDS-PAGE
Storage	Store it under sterile conditions at -20°C to -80°C upon receiving. Recommend to aliquot the protein into smaller quantities for optimal storage. Avoid repeated freeze-thaw cycles.
Reconstitution	It is recommended that sterile water be added to the vial to prepare a stock solution of

 Tel: 1-631-559-9269 1-516-512-3133

 Email: info@creative-biomart.com  Fax: 1-631-938-8127

 45-1 Ramsey Road, Shirley, NY 11967, USA

0.2 ug/ul. Centrifuge the vial at 4°C before opening to recover the entire contents.

GENE INFORMATION

Gene Name [MAPK1 mitogen-activated protein kinase 1 \[Homo sapiens \]](#)

Official Symbol [MAPK1](#)

Synonyms MAPK1; mitogen-activated protein kinase 1; PRKM1, PRKM2; ERK; ERK2; MAPK2; p41mapk; ERK-2; MAPK 2; p42-MAPK; MAP kinase 1; MAP kinase 2; MAP kinase isoform p42; protein tyrosine kinase ERK2; mitogen-activated protein kinase 2; extracellular signal-regulated kinase 2; p38; p40; p41; ERT1; PRKM1; PRKM2; P42MAPK;

Gene ID [5594](#)

mRNA Refseq [NM_002745](#)

Protein Refseq [NP_002736](#)

MIM [176948](#)

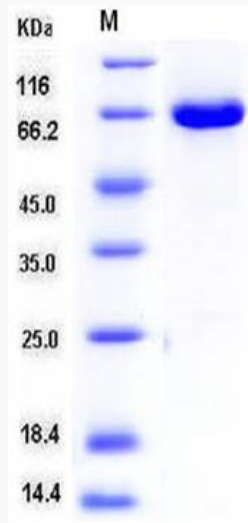
UniProt ID [P28482](#)

 Tel: 1-631-559-9269 1-516-512-3133

 Email: info@creative-biomart.com  Fax: 1-631-938-8127

 45-1 Ramsey Road, Shirley, NY 11967, USA

SDS-PAGE



 Tel: 1-631-559-9269 1-516-512-3133

 Email: info@creative-biomart.com  Fax: 1-631-938-8127

 45-1 Ramsey Road, Shirley, NY 11967, USA