

## Recombinant Human MAPK10, GST-tagged, Active

Cat. No. MAPK10-339H Lot. No. (See product label)

### SPECIFICATION

<b>Product Overview</b>	Recombinant full-length human JNK3 was expressed by baculovirus in <i>Sf9 insect cell</i> using an N-terminal GST tag. MW = 71 kDa.
<b>Species</b>	Human
<b>Source</b>	Sf9 Cells
<b>Description</b>	JNK3 is a member of the c-Jun N-terminal kinases (JNKs) which are part of the mitogen-activated protein (MAP) kinase family, and regulate signal transduction in response to environmental stress. JNK3 phosphorylates various transcription factors such as ATF2, Elk-1 and members of the Jun family. Activation and nuclear localization of JNK3, a neuronal-specific isoform of JNK, has been associated with hypoxic and ischemic damage of CA1 neurons in the hippocampus. Knockout mice lacking JNK3 showed reduced apoptosis of hippocampal neurons and reduced seizure induced by kainic acid, a glutamate-receptor agonist.
<b>Sequence</b>	Full length.
<b>Applications</b>	Kinase Assay, Western Blot.
<b>Storage And Stability</b>	Store product at -70°C. For optimal storage, aliquot target into smaller quantities after centrifugation and store at recommended temperature. For most favorable performance, avoid repeated handling and multiple freeze/thaw cycles.

### GENE INFORMATION

 Tel: 1-631-559-9269 1-516-512-3133

 Email: [info@creative-biomart.com](mailto:info@creative-biomart.com)  Fax: 1-631-938-8127

 45-1 Ramsey Road, Shirley, NY 11967, USA

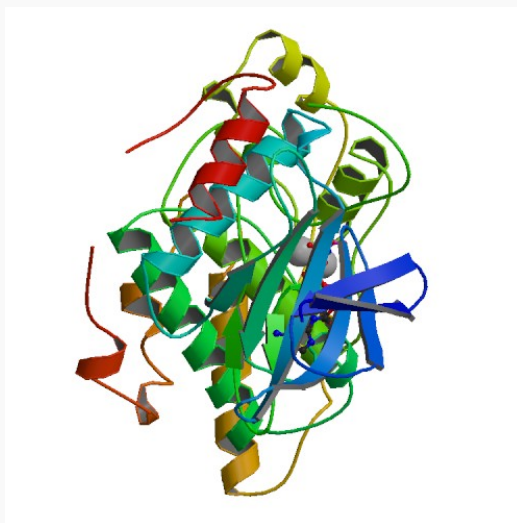
<b>Gene Name</b>	MAPK10 mitogen-activated protein kinase 10 [ Homo sapiens ]
<b>Synonyms</b>	MAPK10; mitogen-activated protein kinase 10; JNK3; JNK3A; PRKM10; p493F12; FLJ12099; FLJ33785; MGC50974; p54bSAPK; MAP kinase; OTTHUMP00000161180; OTTHUMP00000161183; JNK3 alpha protein kinase; c-Jun N-terminal kinase 3; stress activated protein kinase beta; EC 2.7.11.24; MAP kinase p49 3F12; OTTHUMP00000161182; c-Jun kinase 3
<b>Gene ID</b>	5602
<b>mRNA Refseq</b>	NM_002753
<b>Protein Refseq</b>	NP_002744
<b>MIM</b>	602897
<b>UniProt ID</b>	P53779
<b>Chromosome Location</b>	4q22.1-q23
<b>Pathway</b>	Adipocytokine signaling pathway; Colorectal cancer; ErbB signaling pathway; Fc epsilon RI signaling pathway; Focal adhesion; GnRH signaling pathway; Insulin signaling pathway; MAPK signaling pathway; NOD-like receptor signaling pathway; Neurotrophin signaling pathway; Pancreatic cancer; Pathways in cancer; Progesterone-mediated oocyte maturation; RIG-I-like receptor signaling pathway; Toll-like receptor signaling pathway; Type II diabetes mellitus; Wnt signaling pathway
<b>Function</b>	ATP binding; JUN kinase activity; MAP kinase activity; kinase activity; nucleotide binding; protein binding; protein kinase activity; protein serine/threonine kinase activity; transferase activity

 Tel: 1-631-559-9269 1-516-512-3133

 Email: [info@creative-biomart.com](mailto:info@creative-biomart.com)  Fax: 1-631-938-8127

 45-1 Ramsey Road, Shirley, NY 11967, USA

PDB rendering based  
on 1jnk.



 Tel: 1-631-559-9269 1-516-512-3133

 Email: [info@creative-biomart.com](mailto:info@creative-biomart.com)  Fax: 1-631-938-8127

 45-1 Ramsey Road, Shirley, NY 11967, USA