

# Recombinant Human Mitogen-activated Protein Kinase 10, GST-His

Cat. No. MAPK10-691H Lot. No. (See product label)

## SPECIFICATION

<b>Product Overview</b>	Recombinant human JNK3 is fused at the N-terminus to a GST-His 6-thrombin cleavage site tag and expressed in <i>S. frugiperda</i> insect cells using a baculovirus expression system.
<b>Species</b>	Human
<b>Source</b>	<i>S. frugiperda</i>
<b>Description</b>	The protein encoded by this gene is a member of the MAP kinase family. MAP kinases act as an integration point for multiple biochemical signals, and are involved in a wide variety of cellular processes such as proliferation, differentiation, transcription regulation and development. This kinase is activated by various cell stimuli, and targets specific transcription factors, and thus mediates immediate-early gene expression in response to cell stimuli. The activation of this kinase by tumor-necrosis factor alpha (TNF-alpha) is found to be required for TNF-alpha induced apoptosis.
<b>Form</b>	Liquid.
<b>Formulation</b>	In 100 mM NaCl, 50 mM Tris-HCl, 5 mM DTT, 15 mM reduced glutathione, 20% glycerol, pH 8.0.
<b>Molar Mass</b>	82161 Da.

 Tel: 1-631-559-9269 1-516-512-3133

 Email: [info@creative-biomart.com](mailto:info@creative-biomart.com)  Fax: 1-631-938-8127

 45-1 Ramsey Road, Shirley, NY 11967, USA

<b>Specific Activity</b>	≥0.1 U/mg protein.
<b>Unit Definition</b>	One unit is defined as the amount of enzyme required to transfer 1 nmol phosphate to Rb-CTF per min at 30 °C using variable concentrations of ATP (0.1-0.312 μM).
<b>Purity</b>	≥90% by SDS-PAGE.
<b>Storage</b>	≤ -70oC. Ship: Dry Ice Only.

## GENE INFORMATION

<b>Gene Name</b>	<a href="#">MAPK10 mitogen-activated protein kinase 10 [ Homo sapiens ]</a>
<b>Synonyms</b>	MAPK10; mitogen-activated protein kinase 10; JNK3; JNK3A; PRKM10; p493F12; FLJ12099; FLJ33785; MGC50974; p54bSAPK; MAP kinase; OTTHUMP00000161180; OTTHUMP00000161183; JNK3 alpha protein kinase; c-Jun N-terminal kinase 3; stress activated protein kinase beta; EC 2.7.11.24; MAP kinase p49 3F12; OTTHUMP00000161182; c-Jun kinase 3
<b>Gene ID</b>	<a href="#">5602</a>
<b>mRNA Refseq</b>	<a href="#">NM_002753</a>
<b>Protein Refseq</b>	<a href="#">NP_002744</a>
<b>MIM</b>	<a href="#">602897</a>
<b>UniProt ID</b>	<a href="#">P53779</a>
<b>Chromosome Location</b>	4q22.1-q23

 Tel: 1-631-559-9269 1-516-512-3133

 Email: [info@creative-biomart.com](mailto:info@creative-biomart.com)  Fax: 1-631-938-8127

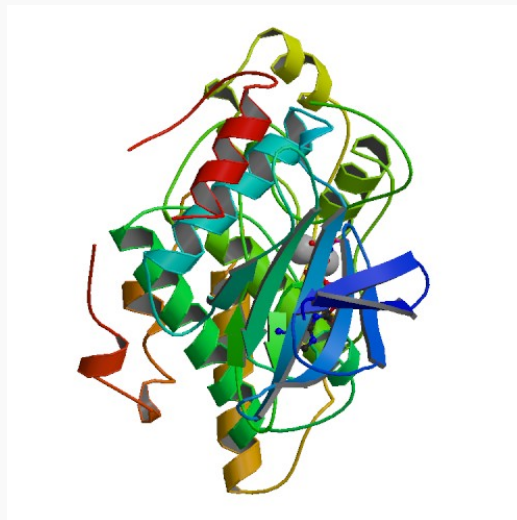
 45-1 Ramsey Road, Shirley, NY 11967, USA

**Pathway**

Adipocytokine signaling pathway; Colorectal cancer; ErbB signaling pathway; Fc epsilon RI signaling pathway; Focal adhesion; GnRH signaling pathway; Insulin signaling pathway; MAPK signaling pathway; NOD-like receptor signaling pathway; Neurotrophin signaling pathway; Pancreatic cancer; Pathways in cancer; Progesterone-mediated oocyte maturation; RIG-I-like receptor signaling pathway; Toll-like receptor signaling pathway; Type II diabetes mellitus; Wnt signaling pathway

**Function**

ATP binding; JUN kinase activity; MAP kinase activity; kinase activity; nucleotide binding; protein binding; protein kinase activity; protein serine/threonine kinase activity; transferase activity

**PDB rendering based on 1jnk.**

 Tel: 1-631-559-9269 1-516-512-3133

 Email: [info@creative-biomart.com](mailto:info@creative-biomart.com)  Fax: 1-631-938-8127

 45-1 Ramsey Road, Shirley, NY 11967, USA