

# Active Recombinant Full Length Human MAPK10 Protein, GST-tagged

**Cat. No.** MAPK10-8439HF    **Lot. No.** (See product label)

## SPECIFICATION

**Product Overview** Full-length human JNK3 [1-426(end) amino acids of accession number NP\_620446.1] was expressed as N-terminal GST-fusion protein (75 kDa) using E.coli expression system. GST-JNK3 was purified by using glutathione sepharose chromatography and activated with His-tagged MAP2K4 and MAP2K7. Activated GST-JNK3 was purified using glutathione sepharose chromatography.

**Species** Human

**Source** E.coli

**ProteinLength** 1-426

**Form** 50 mM Tris-HCl, 150 mM NaCl, 0.05% Brij35, 1 mM DTT, 10% glycerol, pH7.5

**Bio-activity** The activity was measured by off-chip mobility shift assay. The enzyme was incubated with fluorescence-labeled substrate and Mg(or Mn)/ATP. The phosphorylated and unphosphorylated substrates were separated and detected by LabChip™3000.

**Purity** 86%

**Applications** SDS-PAGE

**Storage** Store at -80C. Avoid repeating freeze-thaws.

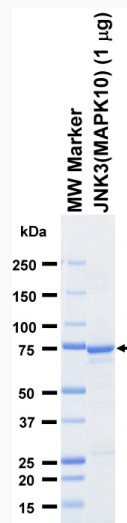
 Tel: 1-631-559-9269    1-516-512-3133

 Email: [info@creative-biomart.com](mailto:info@creative-biomart.com)     Fax: 1-631-938-8127

 45-1 Ramsey Road, Shirley, NY 11967, USA

**GENE INFORMATION**

<b>Gene Name</b>	mitogen-activated protein kinase 10
<b>Official Symbol</b>	MAPK10
<b>Synonyms</b>	MAPK10;JNK3;JNK3A;PRKM10;SAPK1b;p493F12;p54bSAPK
<b>Protein Refseq</b>	<a href="#">NP_620446.1</a>
<b>UniProt ID</b>	<a href="#">P53779</a>

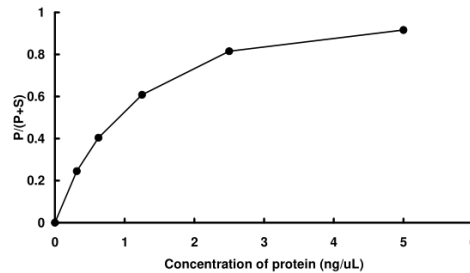
**SDS-PAGE**

The purity was assessed by SDS-PAGE/CBB staining.

 Tel: 1-631-559-9269 1-516-512-3133

 Email: [info@creative-biomart.com](mailto:info@creative-biomart.com)  Fax: 1-631-938-8127

 45-1 Ramsey Road, Shirley, NY 11967, USA

**Activity data****Activity data**

The activity was measured by off-chip mobility shift assay. The enzyme was incubated with fluorescence-labeled substrate and Mg(or Mn)/ATP. The phosphorylated and unphosphorylated substrates were separated and detected by LabChip™3000.

 Tel: 1-631-559-9269 1-516-512-3133

 Email: [info@creative-biomart.com](mailto:info@creative-biomart.com)  Fax: 1-631-938-8127

 45-1 Ramsey Road, Shirley, NY 11967, USA