

Active Recombinant Full Length Human MAPK11 Protein, GST-tagged

Cat. No. MAPK11-2038HF **Lot. No.** (See product label)

SPECIFICATION

Product Overview	Full-length human p38β[1-364(end) amino acids of accession number NP_002742.3] was expressed as N- terminal GST-fusion protein (69 kDa) using E. coli expression system. GST-p38β was purified by using glutathione chromatography.
Species	Human
Source	E.coli
ProteinLength	1-364
Form	50 mM Tris-HCl, 150 mM NaCl, 0.1% CHAPS, 1 mM DTT, 10% glycerol, pH 7.5
Bio-activity	The activity was measured by off-chip mobility shift assay. The enzyme was incubated with fluorescence-labeled substrate and Mg(or Mn)/ATP. The phosphorylated and unphosphorylated substrates were separated and detected by LabChip™3000.
Purity	81%
Applications	SDS-PAGE
Storage	Store at -80C. Avoid repeating freeze-thaws.

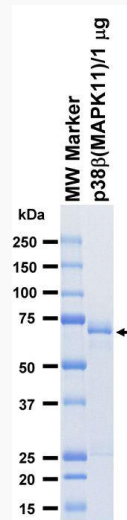
GENE INFORMATION

 Tel: 1-631-559-9269 1-516-512-3133

 Email: info@creative-biomart.com  Fax: 1-631-938-8127

 45-1 Ramsey Road, Shirley, NY 11967, USA

Gene Name	mitogen-activated protein kinase 11
Official Symbol	MAPK11
Synonyms	MAPK11;P38B;P38BETA2;PRKM11;SAPK2;SAPK2B;p38-2;p38Beta
Protein Refseq	NP_002742.3
UniProt ID	Q15759

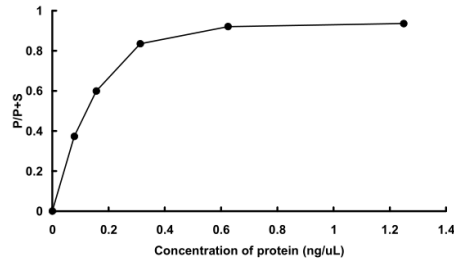
SDS-PAGE


The purity was assessed by SDS-PAGE/CBB staining.

 Tel: 1-631-559-9269 1-516-512-3133

 Email: info@creative-biomart.com  Fax: 1-631-938-8127

 45-1 Ramsey Road, Shirley, NY 11967, USA

Activity data**Activity data**

The activity was measured by off-chip mobility shift assay. The enzyme was incubated with fluorescence-labeled substrate and Mg(or Mn)/ATP. The phosphorylated and unphosphorylated substrates were separated and detected by LabChip™3000.

 Tel: 1-631-559-9269 1-516-512-3133

 Email: info@creative-biomart.com  Fax: 1-631-938-8127

 45-1 Ramsey Road, Shirley, NY 11967, USA