

Recombinant Human MAPK11 Protein (Leu24-Phe308), N-His tagged

Cat. No. MAPK11-4996H Lot. No. (See product label)

SPECIFICATION

Product Overview	Recombinant human MAPK11 (Leu24-Phe308) fused with the N-His tag was expressed in E. coli.
Species	Human
Source	E.coli
ProteinLength	Leu24-Phe308
Form	Lyophilized powder/frozen liquid
Molecular Mass	34.38 kDa
Purity	>90% as determined by SDS-PAGE.
Notes	For research use only.
Storage	Use a manual defrost freezer and avoid repeated freeze thaw cycles. Store at 2 to 8 centigrade for one week. Store at -20 to -80 centigrade for twelve months from the date of receipt.
Storage Buffer	0.01M PBS, pH 7.4, 0.02% NLS
Reconstitution	Reconstitute in sterile water for a stock solution.

 Tel: 1-631-559-9269 1-516-512-3133

 Email: info@creative-biomart.com  Fax: 1-631-938-8127

 45-1 Ramsey Road, Shirley, NY 11967, USA

Shipping They are shipped out with dry ice/blue ice unless customers require otherwise.

GENE INFORMATION

Gene Name MAPK11 mitogen-activated protein kinase 11 [Homo sapiens (human)]

Official Symbol MAPK11

Synonyms MAPK11; mitogen-activated protein kinase 11; PRKM11; p38 2; p38Beta; SAPK2; MAPK 11; MAP kinase 11; MAP kinase p38 beta; stress-activated protein kinase 2; stress-activated protein kinase-2; stress-activated protein kinase 2b; stress-activated protein kinase-2b; mitogen-activated protein kinase p38-2; mitogen-activated protein kinase p38 beta; P38B; p38-2; SAPK2B; P38BETA2;

Gene ID 5600

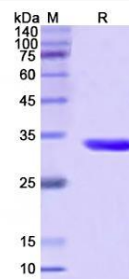
mRNA Refseq NM_002751

Protein Refseq NP_002742

MIM 602898

UniProt ID Q15759

SDS-PAGE



Tel: 1-631-559-9269 1-516-512-3133

Email: info@creative-biomart.com Fax: 1-631-938-8127

45-1 Ramsey Road, Shirley, NY 11967, USA