

Active Recombinant Full Length Human MAPK12 Protein, GST-tagged

Cat. No. MAPK12-9248HF Lot. No. (See product label)

SPECIFICATION

Product Overview Full-length human p38 γ [1-367(end) amino acids of accession number NP_002960.2] was expressed as N-terminal GST-fusion protein (69 kDa) using E. coli expression system. GST-p38 γ was purified by using glutathione sepharose chromatography and activated with His-tagged MAP2K6. Activated GST-p38 γ was purified using glutathione sepharose chromatography.

Species Human

Source E.coli

ProteinLength 1-367

Form 50 mM Tris-HCl, 150 mM NaCl, 0.05% Brij35, 1 mM DTT, 10% glycerol, pH7.5

Bio-activity The activity was determined by IMAP™ assay. The enzyme was incubated with fluorescein labeled peptide and phosphorylation was detected by IMAP™ technology (fluorescence polarization).

Purity 97%

Applications SDS-PAGE

Storage Store at -80C. Avoid repeating freeze-thaws.

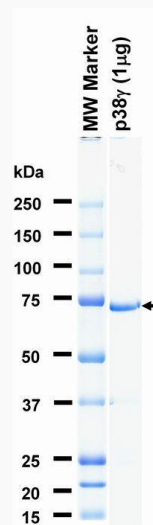
 Tel: 1-631-559-9269 1-516-512-3133

 Email: info@creative-biomart.com  Fax: 1-631-938-8127

 45-1 Ramsey Road, Shirley, NY 11967, USA

GENE INFORMATION

Gene Name	mitogen-activated protein kinase 12
Official Symbol	MAPK12
Synonyms	ERK-6;ERK3;ERK6;MAPK12;P38GAMMA;PRKM12;SAPK-3;SAPK3;p38gamma
Protein Refseq	NP_002960.2
UniProt ID	P53778

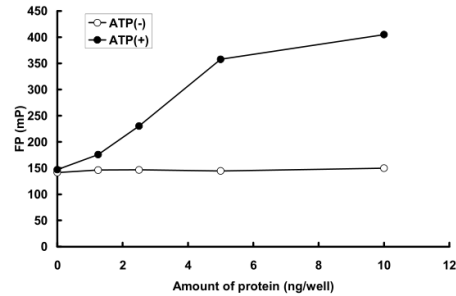
SDS-PAGE

The purity was assessed by SDS-PAGE/CBB staining.

 Tel: 1-631-559-9269 1-516-512-3133

 Email: info@creative-biomart.com  Fax: 1-631-938-8127

 45-1 Ramsey Road, Shirley, NY 11967, USA

Activity data**Activity data**

The activity was determined by IMAP™ assay. The enzyme was incubated with fluorescein labeled peptide and phosphorylation was detected by IMAP™ technology (fluorescence polarization).

Tel: 1-631-559-9269 1-516-512-3133

Email: info@creative-biomart.com Fax: 1-631-938-8127

45-1 Ramsey Road, Shirley, NY 11967, USA