

# Active Recombinant Full Length Human MAPK13 Protein, GST-tagged

**Cat. No.** MAPK13-1297HF    **Lot. No.** (See product label)

## SPECIFICATION

**Product Overview** Full-length human p38 $\delta$  [1-365(end) amino acids of accession number NP\_002745.1] was expressed as N-terminal GST-fusion protein (69 kDa) using E. coli expression system. GST-p38 $\delta$  was purified by using glutathione sepharose chromatography and activated with His-tagged MAP2K6. Activated GST-p38 $\delta$  was purified using glutathione sepharose chromatography.

**Species** Human

**Source** E.coli

**ProteinLength** 1-365

**Form** 50 mM Tris-HCl, 150 mM NaCl, 0.05% Brij35, 1 mM DTT, 10% glycerol, pH7.5

**Bio-activity** The activity was measured by off-chip mobility shift assay. The enzyme was incubated with fluorescence-labeled substrate and Mg(or Mn)/ATP. The phosphorylated and unphosphorylated substrates were separated and detected by LabChip<sup>™</sup>3000.

**Purity** 87%

**Applications** SDS-PAGE

**Storage** Store at -80C. Avoid repeating freeze-thaws.

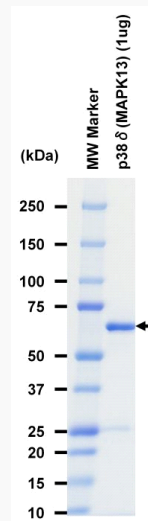
 Tel: 1-631-559-9269    1-516-512-3133

 Email: [info@creative-biomart.com](mailto:info@creative-biomart.com)     Fax: 1-631-938-8127


 45-1 Ramsey Road, Shirley, NY 11967, USA

**GENE INFORMATION**

<b>Gene Name</b>	mitogen-activated protein kinase 13
<b>Official Symbol</b>	MAPK13
<b>Synonyms</b>	MAPK13;MAPK-13;PRKM13;SAPK4;p38delta
<b>Protein Refseq</b>	<a href="#">NP_002745.1</a>
<b>UniProt ID</b>	<a href="#">O15264</a>

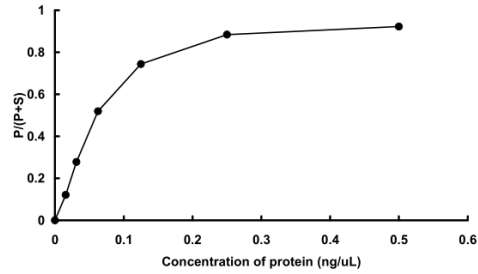
**SDS-PAGE**

The purity was assessed by SDS-PAGE/CBB staining.

 Tel: 1-631-559-9269 1-516-512-3133

 Email: [info@creative-biomart.com](mailto:info@creative-biomart.com)  Fax: 1-631-938-8127

 45-1 Ramsey Road, Shirley, NY 11967, USA

**Activity data****Activity data**

The activity was measured by off-chip mobility shift assay. The enzyme was incubated with fluorescence-labeled substrate and Mg(or Mn)/ATP. The phosphorylated and unphosphorylated substrates were separated and detected by LabChip™3000.

 Tel: 1-631-559-9269 1-516-512-3133

 Email: [info@creative-biomart.com](mailto:info@creative-biomart.com)  Fax: 1-631-938-8127

 45-1 Ramsey Road, Shirley, NY 11967, USA