

Recombinant Human MAPK13 Protein, Myc/DDK-tagged, C13 and N15-labeled

Cat. No. MAPK13-2436H **Lot. No.** (See product label)

SPECIFICATION

Product Overview	MAPK13 MS Standard C13 and N15-labeled recombinant protein (NP_002745) with a C-terminal MYC/DDK tag, was expressed in HEK293 cells.
Species	Human
Source	HEK293
Description	This gene encodes a member of the mitogen-activated protein (MAP) kinase family. MAP kinases act as an integration point for multiple biochemical signals, and are involved in a wide variety of cellular processes such as proliferation, differentiation, transcription regulation and development. The encoded protein is a p38 MAP kinase and is activated by proinflammatory cytokines and cellular stress. Substrates of the encoded protein include the transcription factor ATF2 and the microtubule dynamics regulator stathmin. Alternatively spliced transcript variants have been observed for this gene.
Molecular Mass	42.1 kDa
AA Sequence	MSLIRKKGfYKQDVNKTAWELPKTYVSPTHVGSgAYGSVCSAIDKRSGEKVAIKKLS RPFQSEIFAKRAYRELLLLKHMQHENVIGLLDVFTPASSLRNFYDFYLVMPFMQTDL QKIMGMEFSEEKIQYLvyQMLKGLKYIHSAGVVHRDLKPGNLAVNEDCELKILDFGLA RHADAEMTGYVVTRWYRAPEVILSWMHYNQTVDIWSVGCIMAEMLTGKTLFKGKD YLDQLTQILKVTGVPGTEFVQKLNDKAAKSYIQSLPQTPrKDFTQLFPRASPQAADLL

 Tel: 1-631-559-9269 1-516-512-3133

 Email: info@creative-biomart.com  Fax: 1-631-938-8127

 45-1 Ramsey Road, Shirley, NY 11967, USA

EKMLELDVDKRLTAAQALTHPFFEPFRDPEEETEAAQQPFDDSLHEKLTVDEWKQHI
YKEIVNFSPIARKDSRRRRSGMKLTRTRPLEQKLISEEDLAANDILDYKDDDDKV

Purity > 80% as determined by SDS-PAGE and Coomassie blue staining

Stability Stable for 3 months from receipt of products under proper storage and handling conditions.

Storage Store at -80 centigrade. Avoid repeated freeze-thaw cycles.

Concentration 50 µg/mL as determined by BCA

Storage Buffer 100 mM glycine, 25 mM Tris-HCl, pH 7.3.

GENE INFORMATION

Gene Name [MAPK13 mitogen-activated protein kinase 13 \[Homo sapiens \(human\) \]](#)

Official Symbol [MAPK13](#)

Synonyms MAPK13; mitogen-activated protein kinase 13; PRKM13; p38delta; SAPK4; MAPK 13; MAP kinase 13; MAP kinase p38 delta; stress-activated protein kinase 4; mitogen-activated protein kinase p38 delta; MGC99536;

Gene ID [5603](#)

mRNA Refseq [NM_002754](#)

Protein Refseq [NP_002745](#)

MIM [602899](#)

 Tel: 1-631-559-9269 1-516-512-3133

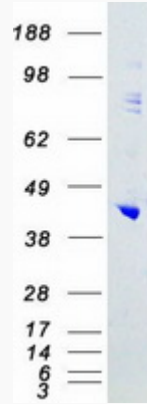
 Email: info@creative-biomart.com  Fax: 1-631-938-8127

 45-1 Ramsey Road, Shirley, NY 11967, USA

UniProt ID

O15264

SDS-PAGE



 Tel: 1-631-559-9269 1-516-512-3133

 Email: info@creative-biomart.com  Fax: 1-631-938-8127

 45-1 Ramsey Road, Shirley, NY 11967, USA