

## Recombinant Human MAPK13 protein, GST-tagged

Cat. No. MAPK13-945H Lot. No. (See product label)

### SPECIFICATION

<b>Product Overview</b>	Recombinant Human MAPK13 protein(O15264) (Met 1-Leu 365) was expressed in Insect Cells, fused with the GST tag at the N-terminus.
<b>Species</b>	Human
<b>Source</b>	Insect Cells
<b>ProteinLength</b>	1-365 aa
<b>Form</b>	Lyophilized from sterile 20mM Tris, 500mM NaCl, 2mM GSH, 10% gly, pH 7.4.
<b>Molecular Mass</b>	The recombinant human MAPK13/GST chimera consists of 589 amino acids and predicts a molecular mass of 68.4 kDa. It migrates as an approximately 60 kDa band in SDS-PAGE under reducing conditions.
<b>Endotoxin</b>	< 1.0 EU per µg of the protein as determined by the LAL method.
<b>Purity</b>	> 95 % as determined by SDS-PAGE
<b>Storage</b>	Store it under sterile conditions at -20°C to -80°C upon receiving. Recommend to aliquot the protein into smaller quantities for optimal storage. Avoid repeated freeze-thaw cycles.
<b>Reconstitution</b>	It is recommended that sterile water be added to the vial to prepare a stock solution of 0.2 ug/ul. Centrifuge the vial at 4°C before opening to recover the entire contents.

 Tel: 1-631-559-9269 1-516-512-3133

 Email: [info@creative-biomart.com](mailto:info@creative-biomart.com)  Fax: 1-631-938-8127

 45-1 Ramsey Road, Shirley, NY 11967, USA

## GENE INFORMATION

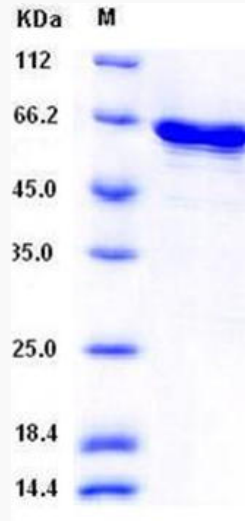
<b>Gene Name</b>	MAPK13 mitogen-activated protein kinase 13 [ Homo sapiens ]
<b>Official Symbol</b>	MAPK13
<b>Synonyms</b>	MAPK13; mitogen-activated protein kinase 13; PRKM13; p38delta; SAPK4; MAPK 13; MAP kinase 13; MAP kinase p38 delta; stress-activated protein kinase 4; mitogen-activated protein kinase p38 delta; MGC99536;
<b>Gene ID</b>	5603
<b>mRNA Refseq</b>	NM_002754
<b>Protein Refseq</b>	NP_002745
<b>MIM</b>	602899
<b>UniProt ID</b>	O15264

 Tel: 1-631-559-9269 1-516-512-3133

 Email: [info@creative-biomart.com](mailto:info@creative-biomart.com)  Fax: 1-631-938-8127

 45-1 Ramsey Road, Shirley, NY 11967, USA

**SDS-PAGE**



 Tel: 1-631-559-9269 1-516-512-3133

 Email: [info@creative-biomart.com](mailto:info@creative-biomart.com)  Fax: 1-631-938-8127

 45-1 Ramsey Road, Shirley, NY 11967, USA