

Active Recombinant Human MAPK14 protein (Met1-Ser360), His-tagged, activated in vitro

Cat. No. MAPK14-144H Lot. No. (See product label)

SPECIFICATION

Product Overview	Active Recombinant Human MAPK14 protein(NP_001306.1) (Met1-Ser360) protein, fused with a polyhistidine tag at the N-terminus, was expressed in Insect Cells. Activated in vitro by MAP2K6.
Species	Human
Source	Insect Cells
ProteinLength	1-360 aa
Form	Supplied as sterile 50 mM Tris-HCl, 150 mM NaCl, 0.25 mM DTT, 0.1 mM EDTA, 0.1 mM PMSF, 25 % glycerol, pH 7.5.
Bio-activity	The specific activity was determined to be 100 nmol/min/mg using MBP as substrate.
Molecular Mass	The recombinant human MAPK14 consists of 379 amino acids and predicts a molecular mass of 43.7 kDa.
Endotoxin	< 1.0 EU per µg of the protein as determined by the LAL method.
Purity	> 95 % as determined by SDS-PAGE
Storage	Store it under sterile conditions at -20°C to -80°C upon receiving. Recommend to aliquot the protein into smaller quantities for optimal storage. Avoid repeated freeze-

 Tel: 1-631-559-9269 1-516-512-3133

 Email: info@creative-biomart.com  Fax: 1-631-938-8127

 45-1 Ramsey Road, Shirley, NY 11967, USA

thaw cycles.

Concentration 0.2-1.0 mg/mL.

GENE INFORMATION

Gene Name MAPK14 mitogen-activated protein kinase 14 [Homo sapiens]

Official Symbol MAPK14

Synonyms

MAPK14; mitogen-activated protein kinase 14; CSBP1, CSBP2, CSPB1; Mxi2; p38; p38 MAP kinase; PRKM14; PRKM15; MAP kinase 14; p38alpha Exip; MAP kinase Mxi2; MAP kinase p38 alpha; CSAID-binding protein; Csaids binding protein; MAX-interacting protein 2; stress-activated protein kinase 2A; p38 mitogen activated protein kinase; mitogen-activated protein kinase p38 alpha; cytokine suppressive anti-inflammatory drug binding protein; cytokine suppressive anti-inflammatory drug-binding protein; RK; CSBP; EXIP; CSBP1; CSBP2; CSPB1; SAPK2A; p38ALPHA;

Gene ID 1432

mRNA Refseq NM_001315

Protein Refseq NP_001306

MIM 600289

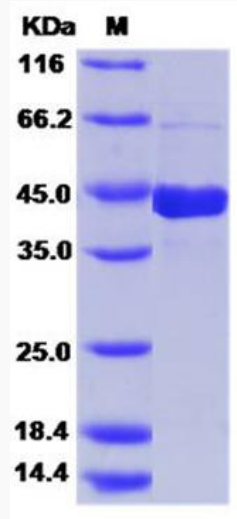
UniProt ID Q16539

 Tel: 1-631-559-9269 1-516-512-3133

 Email: info@creative-biomart.com  Fax: 1-631-938-8127

 45-1 Ramsey Road, Shirley, NY 11967, USA

SDS-PAGE



 Tel: 1-631-559-9269 1-516-512-3133

 Email: info@creative-biomart.com  Fax: 1-631-938-8127

 45-1 Ramsey Road, Shirley, NY 11967, USA