

Recombinant Human MAPK14 protein, His-tagged

Cat. No. MAPK14-356H Lot. No. (See product label)

SPECIFICATION

Product Overview Recombinant Human MAPK14 protein(NP_620581.1) (Met 1-Ser 360) was expressed in Insect Cells, fused with a polyhistidine tag at the carboxy-terminus.

Species Human

Source Insect Cells

ProteinLength 1-360 aa

Form Lyophilized from sterile 20mM Tris, 500mM NaCl, pH 7.4, 10% glycerol.

Molecular Mass The recombinant human MAPK14 consists of 370 amino acids and predicts amolecular mass of 42.8 kDa which is also estimated by SDS-PAGE.

Endotoxin < 1.0 EU per µg of the protein as determined by the LAL method.

Purity > 95 % as determined by SDS-PAGE

Storage Store it under sterile conditions at -20°C to -80°C upon receiving. Recommend to aliquot the protein into smaller quantities for optimal storage. Avoid repeated freeze-thaw cycles.

Reconstitution It is recommended that sterile water be added to the vial to prepare a stock solution of 0.2 ug/ul. Centrifuge the vial at 4°C before opening to recover the entire contents.

 Tel: 1-631-559-9269 1-516-512-3133

 Email: info@creative-biomart.com  Fax: 1-631-938-8127

 45-1 Ramsey Road, Shirley, NY 11967, USA

GENE INFORMATION

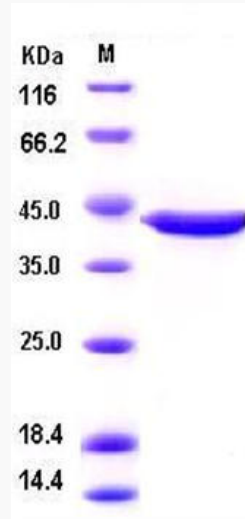
Gene Name	MAPK14 mitogen-activated protein kinase 14 [Homo sapiens]
Official Symbol	MAPK14
Synonyms	MAPK14; mitogen-activated protein kinase 14; CSBP1, CSBP2, CSPB1; Mxi2; p38; p38 MAP kinase; PRKM14; PRKM15; MAP kinase 14; p38alpha Exip; MAP kinase Mxi2; MAP kinase p38 alpha; CSAID-binding protein; Csaids binding protein; MAX-interacting protein 2; stress-activated protein kinase 2A; p38 mitogen activated protein kinase; mitogen-activated protein kinase p38 alpha; cytokine suppressive anti-inflammatory drug binding protein; cytokine suppressive anti-inflammatory drug-binding protein; RK; CSBP; EXIP; CSBP1; CSBP2; CSPB1; SAPK2A; p38ALPHA;
Gene ID	1432
mRNA Refseq	NM_001315
Protein Refseq	NP_001306
MIM	600289
UniProt ID	Q16539

 Tel: 1-631-559-9269 1-516-512-3133

 Email: info@creative-biomart.com  Fax: 1-631-938-8127

 45-1 Ramsey Road, Shirley, NY 11967, USA

SDS-PAGE



 Tel: 1-631-559-9269 1-516-512-3133

 Email: info@creative-biomart.com  Fax: 1-631-938-8127

 45-1 Ramsey Road, Shirley, NY 11967, USA