

# Recombinant Human MAPK14 Protein, MYC/DDK-tagged, C13 and N15-labeled

**Cat. No.** MAPK14-365H    **Lot. No.** (See product label)

## SPECIFICATION

<b>Product Overview</b>	MAPK14 MS Standard C13 and N15-labeled recombinant protein (NP_620583) with a C-terminal MYC/DDK tag, was expressed in HEK293 cells.
<b>Species</b>	Human
<b>Source</b>	HEK293
<b>Description</b>	<p>The protein encoded by this gene is a member of the MAP kinase family. MAP kinases act as an integration point for multiple biochemical signals, and are involved in a wide variety of cellular processes such as proliferation, differentiation, transcription regulation and development. This kinase is activated by various environmental stresses and proinflammatory cytokines. The activation requires its phosphorylation by MAP kinase kinases (MKKs), or its autophosphorylation triggered by the interaction of MAP3K7IP1/TAB1 protein with this kinase. The substrates of this kinase include transcription regulator ATF2, MEF2C, and MAX, cell cycle regulator CDC25B, and tumor suppressor p53, which suggest the roles of this kinase in stress related transcription and cell cycle regulation, as well as in genotoxic stress response. Four alternatively spliced transcript variants of this gene encoding distinct isoforms have been reported. [provided by RefSeq, Jul 2008]</p>
<b>Molecular Mass</b>	35.3 kDa
<b>AA Sequence</b>	MSQERPTFYRQELNKTIWEVPERYQNLSPVGSGAYGSVCAAFDTKTGLRVAVKKLS

 Tel: 1-631-559-9269    1-516-512-3133

 Email: [info@creative-biomart.com](mailto:info@creative-biomart.com)     Fax: 1-631-938-8127

 45-1 Ramsey Road, Shirley, NY 11967, USA

RPFQSIHAKRTYRELRLKMKHENVIGLLDVFTPARSLEEFNDVYLVTHLMGADLN  
 NIVKCQKLTDDHVQFLIYQILRGLKYIHSADIIHRDLKPSNLAVNEDCELKILDFGLARH  
 TDDEMTGYVATRWRAPPEIMLNWMHYNQTVDIWSVGCIMAELLTGRTLFPGTDHID  
 QLKILRLVGTPGAELLKKISSESLSTCWRRCLYWTQIRELQRPKPLHMPTLLSTTILM  
 MNQWPILMISPLKAGTSLTRTRPLEQKLISEEDLAANDILDYKDDDDKV

**Purity** > 80% as determined by SDS-PAGE and Coomassie blue staining

**Stability** Stable for 3 months from receipt of products under proper storage and handling conditions.

**Storage** Store at -80 centigrade. Avoid repeated freeze-thaw cycles.

**Concentration** 50 µg/mL as determined by BCA

**Storage Buffer** 100 mM glycine, 25 mM Tris-HCl, pH 7.3.

## GENE INFORMATION

**Gene Name** MAPK14 mitogen-activated protein kinase 14 [ Homo sapiens (human) ]

**Official Symbol** MAPK14

**Synonyms** MAPK14; mitogen-activated protein kinase 14; CSBP1, CSBP2, CSPB1; Mxi2; p38; p38 MAP kinase; PRKM14; PRKM15; MAP kinase 14; p38alpha Exip; MAP kinase Mxi2; MAP kinase p38 alpha; CSAID-binding protein; Csaids binding protein; MAX-interacting protein 2; stress-activated protein kinase 2A; p38 mitogen activated protein kinase; mitogen-activated protein kinase p38 alpha; cytokine suppressive anti-inflammatory drug binding protein; cytokine suppressive anti-inflammatory drug-binding protein; RK; CSBP; EXIP; CSBP1; CSBP2; CSPB1; SAPK2A; p38ALPHA;

 Tel: 1-631-559-9269 1-516-512-3133

 Email: [info@creative-biomart.com](mailto:info@creative-biomart.com)  Fax: 1-631-938-8127

 45-1 Ramsey Road, Shirley, NY 11967, USA

**Gene ID** 1432

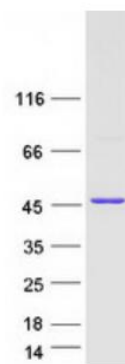
**mRNA Refseq** NM\_139014


**Protein Refseq** NP\_620583

**MIM** 600289

**UniProt ID** Q16539

**SDS-PAGE**



 Tel: 1-631-559-9269 1-516-512-3133

 Email: [info@creative-biomart.com](mailto:info@creative-biomart.com)  Fax: 1-631-938-8127

 45-1 Ramsey Road, Shirley, NY 11967, USA