

Active Recombinant Full Length Human MAPK15 Protein, GST-tagged

Cat. No. MAPK15-2833HF **Lot. No.** (See product label)

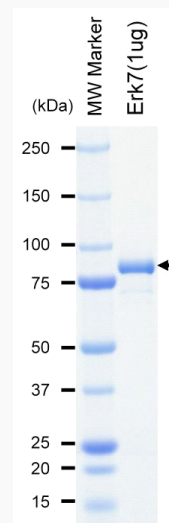
SPECIFICATION

| | |
|-------------------------|--|
| Product Overview | Full-length human Erk7 [1-544(end) amino acids of accession number NP_620590.2] was expressed as N- terminal GST-fusion protein (87 kDa) using baculovirus expression system. GST-Erk7 was purified by using glutathione sepharose chromatography. |
| Species | Human |
| Source | Sf21 Cells |
| ProteinLength | 1-544 |
| Form | 50 mM Tris-HCl, 150 mM NaCl, 0.05% Brij35, 1 mM DTT, 10% glycerol, pH7.5 |
| Bio-activity | The activity was measured by off-chip mobility shift assay. The enzyme was incubated with fluorescence-labeled substrate and Mg(or Mn)/ATP. The phosphorylated and unphosphorylated substrates were separated and detected by LabChip™3000. |
| Purity | 94% |
| Applications | SDS-PAGE |
| Storage | Store at -80C. Avoid repeating freeze-thaws. |

 Tel: 1-631-559-9269 1-516-512-3133

 Email: info@creative-biomart.com  Fax: 1-631-938-8127

 45-1 Ramsey Road, Shirley, NY 11967, USA

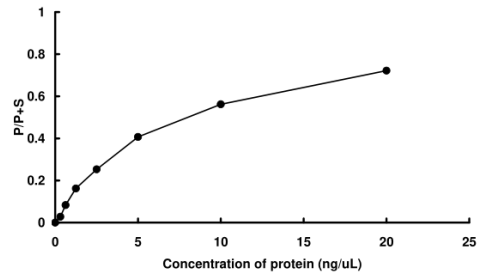
GENE INFORMATION**Gene Name** mitogen-activated protein kinase 15**Official Symbol** MAPK15**Synonyms** MAPK15;ERK7;ERK8**Protein Refseq** [NP_620590.2](#)**UniProt ID** [Q8TD08](#)**SDS-PAGE**

The purity was assessed by SDS-PAGE/CBB staining.

 Tel: 1-631-559-9269 1-516-512-3133

 Email: info@creative-biomart.com  Fax: 1-631-938-8127

 45-1 Ramsey Road, Shirley, NY 11967, USA

Activity data**Activity data**

The activity was measured by off-chip mobility shift assay. The enzyme was incubated with fluorescence-labeled substrate and Mg(or Mn)/ATP. The phosphorylated and unphosphorylated substrates were separated and detected by LabChip™3000.

 Tel: 1-631-559-9269 1-516-512-3133

 Email: info@creative-biomart.com  Fax: 1-631-938-8127

 45-1 Ramsey Road, Shirley, NY 11967, USA