

Recombinant Human MAPK1IP1L protein, hFc-tagged

Cat. No. MAPK1IP1L-4633H Lot. No. (See product label)

SPECIFICATION

Product Overview	Recombinant Human MAPK1IP1L protein(Q8NDC0)(2-245aa), fused with C-terminal hFc tag, was expressed in HEK293.
Species	Human
Source	HEK293
ProteinLength	2-245aa
Tag	C-hFc
Form	If the delivery form is liquid, the default storage buffer is Tris/PBS-based buffer, 5%-50% glycerol. If the delivery form is lyophilized powder, the buffer before lyophilization is Tris/PBS-based buffer, 6% Trehalose, pH 8.0.
Molecular Mass	53.1 kDa
Purity	Greater than 85% as determined by SDS-PAGE.
Storage	Store at -20°C/-80°C upon receipt, aliquoting is necessary for mutiple use. Avoid repeated freeze-thaw cycles.
Reconstitution	We recommend that this vial be briefly centrifuged prior to opening to bring the contents to the bottom. Please reconstitute protein in deionized sterile water to a concentration of 0.1-1.0 mg/mL. We recommend to add 5-50% of glycerol (final

 Tel: 1-631-559-9269 1-516-512-3133

 Email: info@creative-biomart.com  Fax: 1-631-938-8127

 45-1 Ramsey Road, Shirley, NY 11967, USA

concentration) and aliquot for long-term storage at -20°C/-80°C.

AA Sequence

SDEFSLADALPEHSPAKTSAVSNTKPGQPPQGWPGSNPWNNPSAPSSVPSGLPPS
 ATPSTVPFGPAPTGMYPSPVPTGPPPGPPAPFPPSGPSCPPPGGPYPAPTVPGPG
 PTGPYPTPNMPFPELPRPYGAPTDPAAGPLGPWGSMSGPWAPGMGGQYPTPN
 MPYPSPGPYPAPPPPQAPGAAPPVPWGTVPPGAWGPPAPYPAPTGSYPTPGLYPT
 PSNPFQVPSGSPGAPPMPGGPHSYH

GENE INFORMATION

Gene Name

MAPK1IP1L mitogen-activated protein kinase 1 interacting protein 1-like [Homo sapiens]

Official Symbol

MAPK1IP1L

Synonyms

MAPK1IP1L; mitogen-activated protein kinase 1 interacting protein 1-like; C14orf32, chromosome 14 open reading frame 32 , mitogen activated protein kinase 1 interacting protein 1 like; MAPK-interacting and spindle-stabilizing protein-like; MAPK-interacting and spindle-stabilizing protein; mitogen activated protein kinase 1 interacting protein 1-like; mitogen-activated protein kinase 1-interacting protein 1-like; MISS; C14orf32; c14_5346; MGC23138;

Gene ID

93487

mRNA Refseq

NM_144578

Protein Refseq

NP_653179

UniProt ID

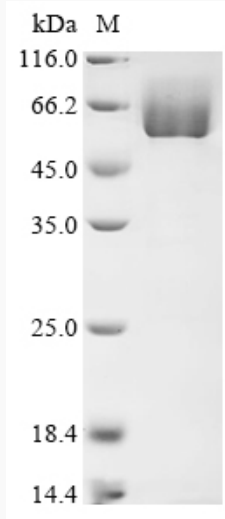
Q8NDC0

 Tel: 1-631-559-9269 1-516-512-3133

 Email: info@creative-biomart.com  Fax: 1-631-938-8127

 45-1 Ramsey Road, Shirley, NY 11967, USA

SDS-PAGE



 Tel: 1-631-559-9269 1-516-512-3133

 Email: info@creative-biomart.com  Fax: 1-631-938-8127

 45-1 Ramsey Road, Shirley, NY 11967, USA