

Recombinant Full Length Human MAPK3 Protein, C-Flag-tagged

Cat. No. MAPK3-635HFL Lot. No. (See product label)

SPECIFICATION

Product Overview	Recombinant Full Length Human MAPK3 Protein, fused to Flag-tag at C-terminus, was expressed in Mammalian cells.
Species	Human
Source	Mammalian Cells
Description	The protein encoded by this gene is a member of the MAP kinase family. MAP kinases, also known as extracellular signal-regulated kinases (ERKs), act in a signaling cascade that regulates various cellular processes such as proliferation, differentiation, and cell cycle progression in response to a variety of extracellular signals. This kinase is activated by upstream kinases, resulting in its translocation to the nucleus where it phosphorylates nuclear targets. Alternatively spliced transcript variants encoding different protein isoforms have been described.
Form	25 mM Tris HCl, pH 7.3, 100 mM glycine, 10% glycerol.
Molecular Mass	43 kDa
AA Sequence	MAAAAAQGGGGGEP RRTEGVGPGVPGEVEMVKGQPF DVGPRYTQLQYIGEGAYG MVSSAYDHVRKTRVAI KKISPF EHQTYCQRTLREIQILLRFRHENVIGIRDILRASTLE AMRDVYIVQDLMETDLYKLLKSQQLSN DHICYFLYQILRGLKYIHSANVLHRDLKPSN LLINTTCDLKICDFGLARIADPEHDHTGFLTEYVATR WY RAPEIMLNSKGYTKSIDIWS VGCILAEMLSNRPIFP GKHYLDQLNHILGILGSPSQEDLN CIINMKARNY LQSLPSKTK

 Tel: 1-631-559-9269 1-516-512-3133

 Email: info@creative-biomart.com  Fax: 1-631-938-8127

 45-1 Ramsey Road, Shirley, NY 11967, USA

	<p>VAWAKLFPKSDSKALDLLDRMLTFNPNKRITVEEALAHPLYEQYYDPTDEPVAEEPF TFAM ELDDLPKERLKElifQETARFQPGVLEAPTRTRPLEQKLISEEDLAANDILDYKDDDD KV</p>
Purity	> 80% as determined by SDS-PAGE and Coomassie blue staining.
Stability	Stable for 12 months from the date of receipt of the product under proper storage and handling conditions. Avoid repeated freeze-thaw cycles.
Storage	Store at -80 centigrade.
Concentration	>50 ug/mL as determined by microplate BCA method.
Preparation	Recombinant protein was captured through anti-DDK affinity column followed by conventional chromatography steps.
Protein Families	Druggable Genome, ES Cell Differentiation/IPS, Protein Kinase
Protein Pathways	Acute myeloid leukemia, Adherens junction, Alzheimer's disease, Axon guidance, B cell receptor signaling pathway, Bladder cancer, Chemokine signaling pathway, Chronic myeloid leukemia, Colorectal cancer, Dorso-ventral axis formation, Endometrial cancer, ErbB signaling pathway, Fc epsilon RI signaling pathway, Fc gamma R-mediated phagocytosis, Focal adhesion, Gap junction, Glioma, GnRH signaling pathway, Insulin signaling pathway, Long-term depression, Long-term potentiation, MAPK signaling pathway, Melanogenesis, Melanoma, mTOR signaling pathway, Natural killer cell mediated cytotoxicity, Neurotrophin signaling pathway, NOD-like receptor signaling pathway, Non-small cell lung cancer, Oocyte meiosis, Pancreatic cancer, Pathways in cancer, Prion diseases, Progesterone-mediated oocyte maturation, Prostate cancer, Regulation of actin cytoskeleton, Renal cell

 Tel: 1-631-559-9269 1-516-512-3133

 Email: info@creative-biomart.com  Fax: 1-631-938-8127

 45-1 Ramsey Road, Shirley, NY 11967, USA

carcinoma, T cell receptor signaling pathway, TGF-beta signaling pathway, Thyroid cancer, Toll-like receptor signaling pathway, Type II diabetes mellitus, Vascular smooth muscle contraction, VEGF signaling pathway

Full Length Full L.

GENE INFORMATION

Gene Name MAPK3 mitogen-activated protein kinase 3 [Homo sapiens (human)]

Official Symbol MAPK3

Synonyms ERK1; ERT2; ERK-1; PRKM3; P44ERK1; P44MAPK; HS44KDAP; HUMKER1A; p44-ERK1; p44-MAPK

Gene ID 5595

mRNA Refseq NM_002746.3

Protein Refseq NP_002737.2

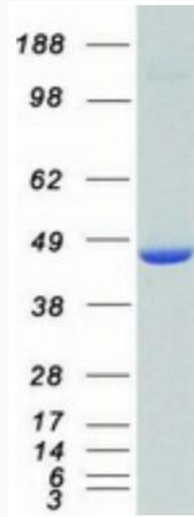
MIM 601795

UniProt ID P27361

 Tel: 1-631-559-9269 1-516-512-3133

 Email: info@creative-biomart.com  Fax: 1-631-938-8127

 45-1 Ramsey Road, Shirley, NY 11967, USA



Coomassie blue staining of purified MAPK3 protein.

 Tel: 1-631-559-9269 1-516-512-3133

 Email: info@creative-biomart.com  Fax: 1-631-938-8127

 45-1 Ramsey Road, Shirley, NY 11967, USA