

Recombinant Full Length Human MAPK7 Protein, C-Flag-tagged

Cat. No. MAPK7-2125HFL **Lot. No.** (See product label)

SPECIFICATION

Product Overview	Recombinant Full Length Human MAPK7 Protein, fused to Flag-tag at C-terminus, was expressed in Mammalian cells.
Species	Human
Source	Mammalian Cells
Description	The protein encoded by this gene is a member of the MAP kinase family. MAP kinases act as an integration point for multiple biochemical signals, and are involved in a wide variety of cellular processes such as proliferation, differentiation, transcription regulation and development. This kinase is specifically activated by mitogen-activated protein kinase kinase 5 (MAP2K5/MEK5). It is involved in the downstream signaling processes of various receptor molecules including receptor type kinases, and G protein-coupled receptors. In response to extracellular signals, this kinase translocates to cell nucleus, where it regulates gene expression by phosphorylating, and activating different transcription factors. Four alternatively spliced transcript variants of this gene encoding two distinct isoforms have been reported.
Form	25 mM Tris HCl, pH 7.3, 100 mM glycine, 10% glycerol.
Molecular Mass	88.2 kDa
AA Sequence	MAEPLKEEDGEDGSAEPPGPVKAEPAPHTAASVAAKNLALLKARSFDVTFDVGDEYEI

 Tel: 1-631-559-9269 1-516-512-3133

 Email: info@creative-biomart.com  Fax: 1-631-938-8127

 45-1 Ramsey Road, Shirley, NY 11967, USA

IETIGNGAYGVVS SARRRLTGQQVAIKKIPNAFDVVTNAKRTLRELKILKHFHHDNIIAI
 KDILRPTVPYGEFKS SVYVVDLDM ESDLHQIIHSSQPLTLEHVRYFLYQLLRGLKYMHS
 AQVIHRDLKPSNLLVNENCELKIGDFGMARGLCTS PAEHQYFMTEYVATRWRAPPE
 LMLSLHEYTQAIDLWSVGCIFGEMLARRQLFPGKNYVHQLQLIMMVLGT PSPAVIQA
 VGAERVRAIYQSLPPRQPVPWETVYPGADRQALSLLGRMLRFEPSARISAAAALRH
 PFLAKY HDPDDEPDCAPPDFDAFDREALTRERIKEAIVAEIEDFHARREGIRQQIRFQ
 PSLQPVASEPGCPDVEMP SPWAPSGDCAMESPPPAPPPCPGPAPDTIDLTLQPPP
 PVSEPAPPKKDGAISDNTKAALKAALLKSLRSR LRDGPSAPLEAPEPRKPVTAQER
 QREREKRRRRQERAKERERKRRQERERKERGAGASGGPSTDPLAGLV LSDNDRS
 LLERWTRMARPAAPALTSVPAPAPAPTPTPTPVQPTSPPPGPVAQPTGPQPQSAGS
 TSGPVPQ PACPPPGPAPHPTGPPGPIVPAPPQIATSTSLAAQSLVPPPGLPGSST
 PGVLPYFPPGLPPPDAGGAP QSSMSESPDVNLVTQQLSKSQVEDPLPPVFSGTPK
 GSGAGYGVGFDLEEFNLQSFDMGVADGPQDGGQADS ASLSASLLADWLEGHGMNP
 ADIESLQREIQMDSPMLLADLPDLQDP TRTRPLEQKLISEEDLAANDILDYKDDDDKV

Purity	> 80% as determined by SDS-PAGE and Coomassie blue staining.
Stability	Stable for 12 months from the date of receipt of the product under proper storage and handling conditions. Avoid repeated freeze-thaw cycles.
Storage	Store at -80 centigrade.
Concentration	>50 ug/mL as determined by microplate BCA method.
Preparation	Recombinant protein was captured through anti-DDK affinity column followed by conventional chromatography steps.
Protein Families	Druggable Genome, Protein Kinase
Protein Pathways	Gap junction, GnRH signaling pathway, MAPK signaling pathway, Neurotrophin

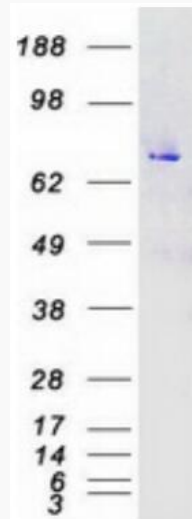
 Tel: 1-631-559-9269 1-516-512-3133

 Email: info@creative-biomart.com  Fax: 1-631-938-8127

 45-1 Ramsey Road, Shirley, NY 11967, USA

signaling pathway

Full Length Full L.**GENE INFORMATION****Gene Name** MAPK7 mitogen-activated protein kinase 7 [Homo sapiens (human)]**Official Symbol** MAPK7**Synonyms** BMK1; ERK4; ERK5; PRKM7**Gene ID** 5598**mRNA Refseq** NM_002749.4**Protein Refseq** NP_002740.2**MIM** 602521**UniProt ID** Q13164 Tel: 1-631-559-9269 1-516-512-3133 Email: info@creative-biomart.com  Fax: 1-631-938-8127 45-1 Ramsey Road, Shirley, NY 11967, USA



Coomassie blue staining of purified MAPK7 protein.

 Tel: 1-631-559-9269 1-516-512-3133

 Email: info@creative-biomart.com  Fax: 1-631-938-8127

 45-1 Ramsey Road, Shirley, NY 11967, USA