

Recombinant Human Mitogen-Activated Protein Kinase 8, GST-tagged

Cat. No. MAPK8-554H Lot. No. (See product label)

SPECIFICATION

Product Overview	Recombinant Human JNK1- β 1/MAPK8 (K55M) (a.a.2-383) with N-terminal GST tag was expressed in <i>E. coli</i> . MW = 70 kDa.
Species	Human
Source	<i>E. coli</i>
ProteinLength	2-383 a.a.
Description	<p>JNK1 is a member of the MAP kinase group that is activated by dual phosphorylation at thr and tyr residues during exposure to stress such as UV irradiation. JNK1 binds to the c-Jun transactivation domain and phosphorylates it on Ser-63 and Ser-73.</p> <p>JNK1 has been shown to play an important role in disease processes. Activation of JNK1 results in defects in myotube viability and integrity leading to dystrophic myofiber destruction. JNK1 activity is also abnormally elevated in obesity and removal of JNK1 results in decreased adiposity and significantly improved insulin sensitivity.</p>
Application	Useful for the study of enzyme kinetics, screening inhibitors, and selectivity profiling.
Purity	≥85%.
Formulated In	25 mM Tris-HCl, pH 8.0, 100 mM NaCl, 0.05% Tween-20, 20% glycerol, and 3 mM DTT.

 Tel: 1-631-559-9269 1-516-512-3133

 Email: info@creative-biomart.com  Fax: 1-631-938-8127

 45-1 Ramsey Road, Shirley, NY 11967, USA

Stability >12 months at -80°C.

GENE INFORMATION

Gene Name [MAPK8 mitogen-activated protein kinase 8 \[Homo sapiens \]](#)

Synonyms mitogen-activated protein kinase 8; JNK; JNK1; PRKM8; SAPK1; JNK1A2; JNK21B1/2; MAPK8; JNK-46; MAPK 8; MAP kinase 8; protein kinase JNK1; JUN N-terminal kinase; JNK1 beta protein kinase; JNK1 alpha protein kinase; c-Jun N-terminal kinase 1; stress-activated protein kinase 1; stress-activated protein kinase JNK1; mitogen-activated protein kinase 8 isoform JNK1 beta2; mitogen-activated protein kinase 8 isoform JNK1 alpha1; Stress-activated protein kinase JNK1; EC 2.7.11.24; OTTHUMP00000019552

Gene ID [5599](#)

mRNA Refseq [NM_002750.2](#)

Protein Refseq [NP_002741.1](#)

MIM [601158](#)

UniProt ID [P45983](#)

Chromosome Location 10q11.22

Pathway Adipocytokine signaling pathway; Colorectal cancer; Epithelial cell signaling in Helicobacter pylori infection; ErbB signaling pathway; Fc epsilon RI signaling pathway; Focal adhesion; GnRH signaling pathway; Insulin signaling pathway; MAPK signaling pathway; NOD-like receptor signaling pathway; Neurotrophin signaling

 Tel: 1-631-559-9269 1-516-512-3133

 Email: info@creative-biomart.com  Fax: 1-631-938-8127

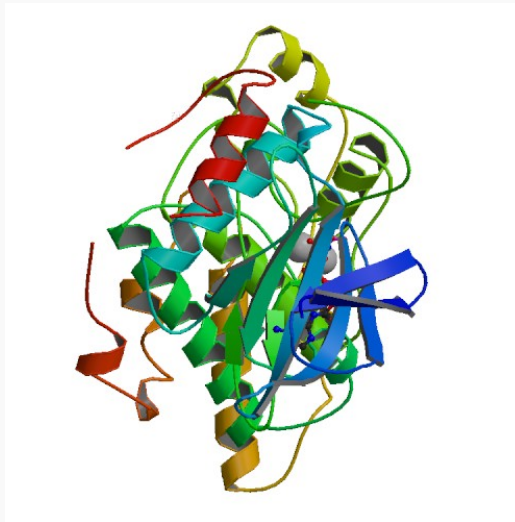
 45-1 Ramsey Road, Shirley, NY 11967, USA

pathway; Pancreatic cancer; Pathways in cancer; Progesterone-mediated oocyte maturation; RIG-I-like receptor signaling pathway; Toll-like receptor signaling pathway; Type II diabetes mellitus; Wnt signaling pathway

Function

ATP binding; JUN kinase activity; MAP kinase activity; kinase activity; nucleotide binding; protein binding; protein serine/threonine kinase activity; transferase activity

PDB rendering based on 1jnk.



 Tel: 1-631-559-9269 1-516-512-3133

 Email: info@creative-biomart.com  Fax: 1-631-938-8127

 45-1 Ramsey Road, Shirley, NY 11967, USA