

Recombinant Human MAPK8 protein, GST-tagged

Cat. No. MAPK8-781H Lot. No. (See product label)

SPECIFICATION

Product Overview	Recombinant Human MAPK8 protein(NP_620637.1) (Met 1-Arg 427) was expressed in Insect Cells with the GST tag at the N-terminus.
Species	Human
Source	Insect Cells
ProteinLength	1-427 aa
Form	Lyophilized from sterile 50mM Tris, 100mM NaCl, pH 8.0, 25% glycerol.
Molecular Mass	The recombinant human MAPK8/GST chimera consists of 652 amino acids and predicts a molecular mass of 75 kDa. It migrates as an approximately 65 kDa band in SDS-PAGE under reducing conditions.
Endotoxin	< 1.0 EU per µg of the protein as determined by the LAL method.
Purity	> 90 % as determined by SDS-PAGE
Storage	Store it under sterile conditions at -20°C to -80°C upon receiving. Recommend to aliquot the protein into smaller quantities for optimal storage. Avoid repeated freeze-thaw cycles.
Reconstitution	It is recommended that sterile water be added to the vial to prepare a stock solution of 0.2 ug/ul. Centrifuge the vial at 4°C before opening to recover the entire contents.

 Tel: 1-631-559-9269 1-516-512-3133

 Email: info@creative-biomart.com  Fax: 1-631-938-8127

 45-1 Ramsey Road, Shirley, NY 11967, USA

GENE INFORMATION

Gene Name MAPK8 mitogen-activated protein kinase 8 [Homo sapiens]

Official Symbol MAPK8

Synonyms MAPK8; mitogen-activated protein kinase 8; PRKM8; JNK; JNK1; JUN N terminal kinase; SAPK1; MAP kinase 8; JUN N-terminal kinase; c-Jun N-terminal kinase 1; stress-activated protein kinase 1; stress-activated protein kinase 1c; mitogen-activated protein kinase 8 isoform JNK1 beta2; mitogen-activated protein kinase 8 isoform JNK1 alpha1; JNK-46; JNK1A2; SAPK1c; JNK21B1/2;

Gene ID 5599

mRNA Refseq NM_002750

Protein Refseq NP_002741

MIM 601158

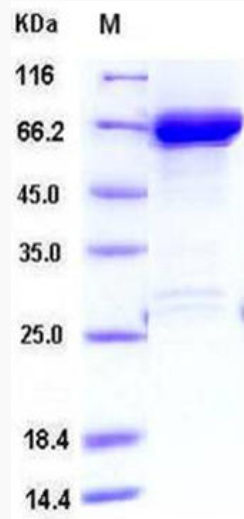
UniProt ID P45983

 Tel: 1-631-559-9269 1-516-512-3133

 Email: info@creative-biomart.com  Fax: 1-631-938-8127

 45-1 Ramsey Road, Shirley, NY 11967, USA

SDS-PAGE



 Tel: 1-631-559-9269 1-516-512-3133

 Email: info@creative-biomart.com  Fax: 1-631-938-8127

 45-1 Ramsey Road, Shirley, NY 11967, USA