

# Recombinant Human MAPK8IP1 Protein, Myc/DDK-tagged, C13 and N15-labeled

**Cat. No.** MAPK8IP1-2748H    **Lot. No.** (See product label)

## SPECIFICATION

<b>Product Overview</b>	MAPK8IP1 MS Standard C13 and N15-labeled recombinant protein (NP_005447) with a C-terminal MYC/DDK tag, was expressed in HEK293 cells.
<b>Species</b>	Human
<b>Source</b>	HEK293
<b>Description</b>	This gene encodes a regulator of the pancreatic beta-cell function. It is highly similar to JIP-1, a mouse protein known to be a regulator of c-Jun amino-terminal kinase (Mapk8). This protein has been shown to prevent MAPK8 mediated activation of transcription factors, and to decrease IL-1 beta and MAP kinase kinase 1 (MEKK1) induced apoptosis in pancreatic beta cells. This protein also functions as a DNA-binding transactivator of the glucose transporter GLUT2. RE1-silencing transcription factor (REST) is reported to repress the expression of this gene in insulin-secreting beta cells. This gene is found to be mutated in a type 2 diabetes family, and thus is thought to be a susceptibility gene for type 2 diabetes.
<b>Molecular Mass</b>	77.5 kDa
<b>AA Sequence</b>	MAERESGGLGGAASPPAASPFLGLHIASPPNFRRLTHDISLEEFEDLSEITDECGI SLQCKDTLSLRPPRAGLLSAGGGGAGSRLQAEMLQMDLIDATGDTPGAEDDEEDD DEERAARRPGAGPPKAESGQEPASRGQGQSQQGSGDTPRKRPTTLNLF PQVPRSQDTLNNNSLGGKHSWQDRVSRSSSPLKTGEQTPPHEHICVSDLESPQSG

 Tel: 1-631-559-9269    1-516-512-3133

 Email: [info@creative-biomart.com](mailto:info@creative-biomart.com)     Fax: 1-631-938-8127

 45-1 Ramsey Road, Shirley, NY 11967, USA

PAPTTGRGTSTDSPCRRSTATQMAPPGGPPAATPGGRGHSRDRIHQADVRLEA  
 TEEIYLTPVQRPPDAAEPTSAFLPPTESRMSVSSDPDPAAYPSTAGRPHPSISEEEE  
 GFDCMSSPERAEPGGGGWRGSLGEP PPPRASLSSDTSALSYSVKYTLVDEHA  
 QLELVSLRPCFGDYSDSDSATVYDNCASVSSPYESAIGEEYEEAPRPQPPACLSE  
 DSTPDEPDVHFSKKFLNVFMSGRSRSSSAESFGLFSCIINGEEQEQTHRAIFRFVPR  
 HEDELELEVDDPLLVELQAEDYWYEAYNMRTGARGVFPAYYAIEVTKEPEHMAALA  
 KNSDWVDQFRVKFLGSGVQVPYHKGNDVLCAMQKIATTRRLTVHFNPPSSCVLEIN  
 VRGVKIGVKADDSQEAKGNKCSHFFQLKNISFCGYHPKNNKYFGFITKHPADNRFAC  
 HVFVSEDSTKALAESVGRAFQQFYKQFVEYTCPTEDIYLETTRTRPLEQKLISEEDLAA  
 NDILDYKDDDDKV

**Purity** > 80% as determined by SDS-PAGE and Coomassie blue staining

**Stability** Stable for 3 months from receipt of products under proper storage and handling conditions.

**Storage** Store at -80 centigrade. Avoid repeated freeze-thaw cycles.

**Concentration** 50 µg/mL as determined by BCA

**Storage Buffer** 100 mM glycine, 25 mM Tris-HCl, pH 7.3.

## GENE INFORMATION

**Gene Name** MAPK8IP1 mitogen-activated protein kinase 8 interacting protein 1 [ Homo sapiens (human) ]

**Official Symbol** MAPK8IP1

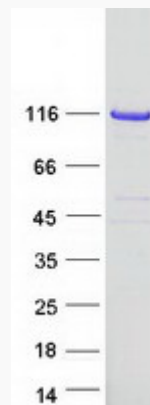
**Synonyms** MAPK8IP1; mitogen-activated protein kinase 8 interacting protein 1; IB1; JIP1; JIP-1; PRKM8IP; C-Jun-amino-terminal kinase-interacting protein 1; IB-1; JNK MAP kinase

 Tel: 1-631-559-9269 1-516-512-3133

 Email: [info@creative-biomart.com](mailto:info@creative-biomart.com)  Fax: 1-631-938-8127

 45-1 Ramsey Road, Shirley, NY 11967, USA

scaffold protein 1; JNK-interacting protein 1; PRKM8 interacting protein; islet-brain 1

**Gene ID** 9479**mRNA Refseq** NM\_005456**Protein Refseq** NP\_005447**MIM** 604641**UniProt ID** Q9UQF2**SDS-PAGE** Tel: 1-631-559-9269 1-516-512-3133 Email: [info@creative-biomart.com](mailto:info@creative-biomart.com)  Fax: 1-631-938-8127 45-1 Ramsey Road, Shirley, NY 11967, USA