

Active Recombinant Full Length Human MAPKAPK3 Protein, GST-tagged

Cat. No. MAPKAPK3-3301HF **Lot. No.** (See product label)

SPECIFICATION

| | |
|-------------------------|---|
| Product Overview | Full-length human MAPKAPK3 [1-382(end) amino acids of accession number NP_004626.1] was co- expressed as N-terminal GST-fusion protein (70 kDa) with human His-tagged p38 β [1-364(end) amino acids of accession number NP_002742.3] and human His-tagged MAP2K6 [1-334(end) amino acids of accession number NP_002749.2] using baculovirus expression system. GST-MAPKAPK3 was purified by using glutathione sepharose chromatography and Ni-NTA chromatography. |
| Species | Human |
| Source | Sf21 Cells |
| ProteinLength | 1-382 |
| Form | 50 mM Tris-HCl, 150 mM NaCl, 0.05% Brij35, 1 mM DTT, 10% glycerol, pH7.5 |
| Bio-activity | The activity was measured by off-chip mobility shift assay. The enzyme was incubated with fluorescence-labeled substrate and Mg(or Mn)/ATP. The phosphorylated and unphosphorylated substrates were separated and detected by LabChip [™] 3000. |
| Purity | 76% |
| Applications | SDS-PAGE |

 Tel: 1-631-559-9269 1-516-512-3133

 Email: info@creative-biomart.com  Fax: 1-631-938-8127

 45-1 Ramsey Road, Shirley, NY 11967, USA

Storage Store at -80C. Avoid repeating freeze-thaws.

GENE INFORMATION

Gene Name mitogen-activated protein kinase-activated protein kinase 3

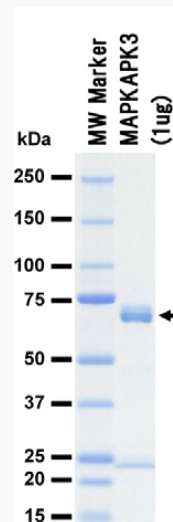
Official Symbol MAPKAPK3

Synonyms MAPKAPK3;3PK;MAPKAP-K3;MAPKAP3;MAPKAPK-3;MDPT3;MK-3;MK3;3pK

Protein Refseq [NP_004626.1](#)

UniProt ID [Q16644](#)

SDS-PAGE

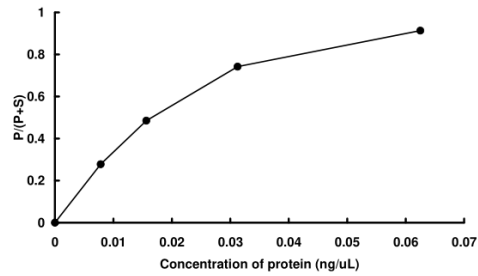


The purity was assessed by SDS-PAGE/CBB staining.

 Tel: 1-631-559-9269 1-516-512-3133

 Email: info@creative-biomart.com  Fax: 1-631-938-8127

 45-1 Ramsey Road, Shirley, NY 11967, USA

Activity data**Activity data**

The activity was measured by off-chip mobility shift assay. The enzyme was incubated with fluorescence-labeled substrate and Mg(or Mn)/ATP. The phosphorylated and unphosphorylated substrates were separated and detected by LabChip™3000.

 Tel: 1-631-559-9269 1-516-512-3133

 Email: info@creative-biomart.com  Fax: 1-631-938-8127

 45-1 Ramsey Road, Shirley, NY 11967, USA