

Active Recombinant Full Length Human MAPKAPK5 Protein, GST-tagged

Cat. No. MAPKAPK5-8937HF Lot. No. (See product label)

SPECIFICATION

Product Overview	Full-length human MAPKAPK5 [1-471(end) amino acids of accession number NP_003659.2] was co- expressed as N-terminal GST-fusion protein (81 kDa) with human His-tagged p38 β [1-364(end) amino acids of accession number NP_002742.3] and human His-tagged MAP2K6 [1-334(end) amino acids of accession number NP_002749] using baculovirus expression system. GST-MAPKAPK5 was purified by using glutathione sepharose chromatography.
Species	Human
Source	Sf21 Cells
ProteinLength	1-471
Form	50 mM Tris-HCl, 150 mM NaCl, 0.05% Brij35, 1 mM DTT, 10% glycerol, pH7.5
Bio-activity	The activity was measured by off-chip mobility shift assay. The enzyme was incubated with fluorescence-labeled substrate and Mg(or Mn)/ATP. The phosphorylated and unphosphorylated substrates were separated and detected by LabChip™3000.
Purity	90%
Applications	SDS-PAGE

 Tel: 1-631-559-9269 1-516-512-3133

 Email: info@creative-biomart.com  Fax: 1-631-938-8127

 45-1 Ramsey Road, Shirley, NY 11967, USA

Storage Store at -80C. Avoid repeating freeze-thaws.

GENE INFORMATION

Gene Name mitogen-activated protein kinase-activated protein kinase 5

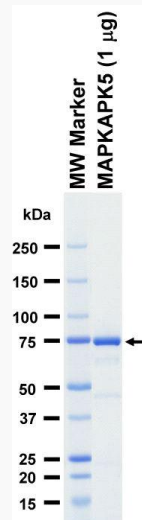
Official Symbol MAPKAPK5

Synonyms MAPKAPK5;MAPKAP-K5;MK-5;MK5;PRAK

Protein Refseq [NP_003659.2](#)

UniProt ID [Q8IW41](#)

SDS-PAGE

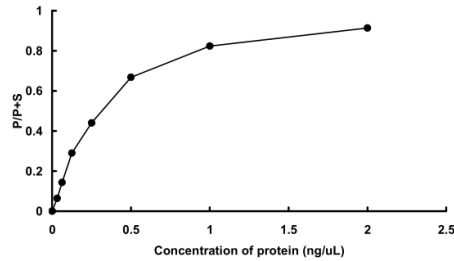


The purity was assessed by SDS-PAGE/CBB staining.

 Tel: 1-631-559-9269 1-516-512-3133

 Email: info@creative-biomart.com  Fax: 1-631-938-8127

 45-1 Ramsey Road, Shirley, NY 11967, USA

Activity data**Activity data**

The activity was measured by off-chip mobility shift assay. The enzyme was incubated with fluorescence-labeled substrate and Mg(or Mn)/ATP. The phosphorylated and unphosphorylated substrates were separated and detected by LabChip™3000.

 Tel: 1-631-559-9269 1-516-512-3133

 Email: info@creative-biomart.com  Fax: 1-631-938-8127

 45-1 Ramsey Road, Shirley, NY 11967, USA