

Recombinant Human MAPRE2 Protein, Myc/DDK-tagged, C13 and N15-labeled

Cat. No. MAPRE2-748H **Lot. No.** (See product label)

SPECIFICATION

Product Overview	MAPRE2 MS Standard C13 and N15-labeled recombinant protein (NP_001137299) with a C-terminal MYC/DDK tag, was expressed in HEK293 cells.
Species	Human
Source	HEK293
Description	The protein encoded by this gene shares significant homology to the adenomatous polyposis coli (APC) protein-binding EB1 gene family. This protein is a microtubule-associated protein that is necessary for spindle symmetry during mitosis. It is thought to play a role in the tumorigenesis of colorectal cancers and the proliferative control of normal cells. Alternative splicing of this gene results in multiple transcript variants.
Molecular Mass	35.6 kDa
AA Sequence	MKQNRDQKCPVSQRNSSFQQPGRKPGCSSWGMVNVYSTSITQETMSRHDIIAWV NDIVSLNYTKVEQLCSGAAYCQFMDMLFPGCISLKKVKFQAKLEHEYIHNFKLLQASF KRMNVDKVIPVEKLVKGRFQDNLDFIQWFKKFYDANYDGKEYDPVEARQQGDAIPP PDPGEQIFNLPKKSHHANSPTAGAAKSSPAKPGSTPSRPSSAKRASSSGSASKSD KDLETQVIQLNEQVHSLKLALEGVEKERDFYFGKLRREIELLCQEHGQENDDLVQRLM DILYASEEHEGHTEEPEAEEQAHEQQPPQQEEYTRTRPLEQKLISEEDLAANDILDY KDDDDKV
Purity	> 80% as determined by SDS-PAGE and Coomassie blue staining

 Tel: 1-631-559-9269 1-516-512-3133

 Email: info@creative-biomart.com  Fax: 1-631-938-8127

 45-1 Ramsey Road, Shirley, NY 11967, USA

Stability	Stable for 3 months from receipt of products under proper storage and handling conditions.
Storage	Store at -80 centigrade. Avoid repeated freeze-thaw cycles.
Concentration	50 µg/mL as determined by BCA
Storage Buffer	100 mM glycine, 25 mM Tris-HCl, pH 7.3.

GENE INFORMATION

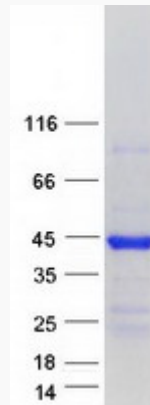
Gene Name	MAPRE2 microtubule associated protein RP/EB family member 2 [Homo sapiens (human)]
Official Symbol	MAPRE2
Synonyms	MAPRE2; microtubule-associated protein, RP/EB family, member 2; microtubule-associated protein RP/EB family member 2; APC binding protein EB1; EB1; EB2; RP1; end-binding protein 2; APC-binding protein EB1; APC-binding protein EB2; T-cell activation protein, EB1 family;
Gene ID	10982
mRNA Refseq	NM_001143827
Protein Refseq	NP_001137299
MIM	605789
UniProt ID	Q15555

 Tel: 1-631-559-9269 1-516-512-3133

 Email: info@creative-biomart.com  Fax: 1-631-938-8127

 45-1 Ramsey Road, Shirley, NY 11967, USA

SDS-PAGE



 Tel: 1-631-559-9269 1-516-512-3133

 Email: info@creative-biomart.com  Fax: 1-631-938-8127

 45-1 Ramsey Road, Shirley, NY 11967, USA