

## Recombinant Cynomolgus MAPT Protein, His tagged

Cat. No. MAPT-01C Lot. No. (See product label)

### SPECIFICATION

**Product Overview** Recombinant Cynomolgus MAPT Protein with His tag was expressed in E. coli.

**Species** Cynomolgus

**Source** E.coli

**Description** This gene encodes the microtubule-associated protein tau (MAPT) whose transcript undergoes complex, regulated alternative splicing, giving rise to several mRNA species. MAPT transcripts are differentially expressed in the nervous system, depending on stage of neuronal maturation and neuron type. MAPT gene mutations have been associated with several neurodegenerative disorders such as Alzheimer's disease, Pick's disease, frontotemporal dementia, cortico-basal degeneration and progressive supranuclear palsy.

**Molecular Mass** The protein has a calculated MW of 44 kDa.

**AA Sequence**

```

MAEPRQEFVDMEDHAGTYGLGDRKDQEGYTMLQDQEGDTDAGLKESPLQTPAED
GSEELGSETSDAKSTPTAEAEAGIGDTPSLEDEAAGHVTQARMVSKSKDGTGSDD
KKAKGADGKTKIATPRGAAPPGQKGQANATRIPAKTPPAPKTPPSSGEPKSGDRS
GYSSPGSPGTPGSRSRTPSLTPPAREPKKVAVVRTPPKSPSSAKSRLQTAPVPMP
DLKNVSKIGSTENLKHQPGGGKVQIINKKLDLSNVQSKCGSKDNIKHVPGGGSVQI
VYKPVDSLKVTSKCGSLGNIHHKPGGGQVEVKSEKLDKDRVQSKIGSLDNITHVPG
GGNKKIETHKLTFRENAKAKTDHGAEIVYKSPVVSVDTSRHLNSVSTGSIDMVDS
PQLATLADEVASLAKQGLHHHHHHHH

```

 Tel: 1-631-559-9269 1-516-512-3133

 Email: [info@creative-biomart.com](mailto:info@creative-biomart.com)  Fax: 1-631-938-8127

 45-1 Ramsey Road, Shirley, NY 11967, USA

<b>Purity</b>	> 90% by SDS-PAGE
<b>Storage</b>	Store it under sterile conditions at -20 to -80 centigrade. It is recommended that the protein be aliquoted for optimal storage. Avoid repeated freeze-thaw cycles.
<b>Concentration</b>	0.22 mg/mL by BCA
<b>Storage Buffer</b>	50 mM Tris, 200 mM NaCl, pH 8.0

## GENE INFORMATION

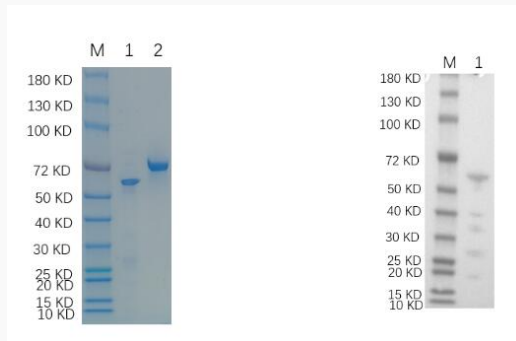
<b>Gene Name</b>	MAPT microtubule associated protein tau [ <i>Macaca fascicularis</i> (crab-eating macaque) ]
<b>Official Symbol</b>	MAPT
<b>Synonyms</b>	MAPT; microtubule associated protein tau; microtubule-associated protein tau
<b>Gene ID</b>	102119414
<b>mRNA Refseq</b>	XM_005584543
<b>Protein Refseq</b>	XP_005584600
<b>UniProt ID</b>	A0A2K5WBI2

 Tel: 1-631-559-9269 1-516-512-3133

 Email: [info@creative-biomart.com](mailto:info@creative-biomart.com)  Fax: 1-631-938-8127

 45-1 Ramsey Road, Shirley, NY 11967, USA

**Reducing 12% SDS-  
PAGE (CBB stained)  
and WB (Anti-His  
Mouse Monoclonal  
Antibody) analysis  
profile of purified  
MAPT**



1. MAPT-01C  
2. BSA

 Tel: 1-631-559-9269 1-516-512-3133

 Email: [info@creative-biomart.com](mailto:info@creative-biomart.com)  Fax: 1-631-938-8127

 45-1 Ramsey Road, Shirley, NY 11967, USA