

Recombinant Cynomolgus MAPT Protein, His tagged

Cat. No. MAPT-02C Lot. No. (See product label)

SPECIFICATION

Product Overview	Recombinant Cynomolgus MAPT Protein with His tag was expressed in HEK293.
Species	Cynomolgus
Source	HEK293
Description	This gene encodes the microtubule-associated protein tau (MAPT) whose transcript undergoes complex, regulated alternative splicing, giving rise to several mRNA species. MAPT transcripts are differentially expressed in the nervous system, depending on stage of neuronal maturation and neuron type. MAPT gene mutations have been associated with several neurodegenerative disorders such as Alzheimer's disease, Pick's disease, frontotemporal dementia, cortico-basal degeneration and progressive supranuclear palsy.
Molecular Mass	The protein has a calculated MW of 44 kDa.
AA Sequence	<pre> AEPRQEFDMEDHAGTYGLGDRKDQEGYTMLQDQEGD TDAGLKESPLQTPAEDG SEELGSETSDAKSTPTAEAE EAGIGDTPSLEDEAAGHVTQARMVSKSKDGTGSDDK KAKGADGKTKIATPRGAAPP GQKGQANATRIPAKTPPAPKTPPSSGEPKSGDRSG YSSPGSPGTPGSRSRTPSL PTPPAREPKKVAVVRTPPKSPSSAKSRLQTAPVMPD LKNVSKIGSTENLKHQP GGGKVIINKKLDLSNVQSKCGSKDNIKHVPGGGSVQIV YKPVDSLKVTSKCGSLGNI HHKPGGGQVEVKSEKLDKDRVQSKIGSLDNITHVPGG GNKKIETHKLTFR ENAKAKTDHGAEIVYKSPVVS GDTSPRHLSNVSSSTGSIDMV DSP QLATLADEV SASLAKQGLHHHHHHHHH </pre>

 Tel: 1-631-559-9269 1-516-512-3133

 Email: info@creative-biomart.com  Fax: 1-631-938-8127

 45-1 Ramsey Road, Shirley, NY 11967, USA

Purity	> 90% by SDS-PAGE
Storage	Store it under sterile conditions at -20 to -80 centigrade. It is recommended that the protein be aliquoted for optimal storage. Avoid repeated freeze-thaw cycles.
Concentration	0.73 mg/mL by BCA
Storage Buffer	PBS, pH 7.4

GENE INFORMATION

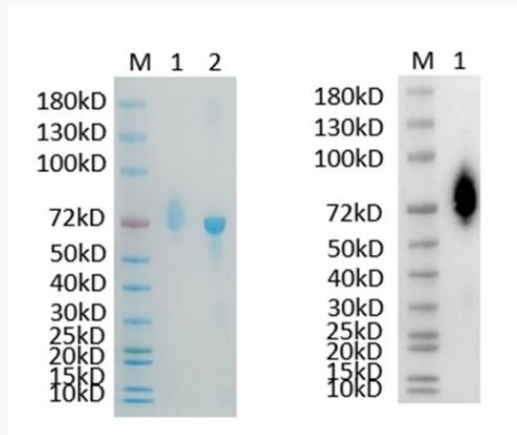
Gene Name	MAPT microtubule associated protein tau [<i>Macaca fascicularis</i> (crab-eating macaque)]
Official Symbol	MAPT
Synonyms	MAPT; microtubule associated protein tau; microtubule-associated protein tau
Gene ID	102119414
mRNA Refseq	XM_005584543
Protein Refseq	XP_005584600
UniProt ID	A0A2K5WBI2

 Tel: 1-631-559-9269 1-516-512-3133

 Email: info@creative-biomart.com  Fax: 1-631-938-8127

 45-1 Ramsey Road, Shirley, NY 11967, USA

**Reducing 12% SDS-
PAGE (CBB stained)
and WB (Anti-His
Mouse Monoclonal
Antibody) analysis
profile of purified
MAPT.**



1. MAPT-02C
2. BSA

 Tel: 1-631-559-9269 1-516-512-3133

 Email: info@creative-biomart.com  Fax: 1-631-938-8127

 45-1 Ramsey Road, Shirley, NY 11967, USA