

# Recombinant Human MAPT Protein, MYC/DDK-tagged, C13 and N15-labeled

Cat. No. MAPT-032H Lot. No. (See product label)

## SPECIFICATION

### Product Overview

MAPT MS Standard C13 and N15-labeled recombinant protein (NP\_005901) with a C-terminal MYC/DDK tag, was expressed in HEK293 cells.

### Species

Human

### Source

HEK293

### Description

This gene encodes the microtubule-associated protein tau (MAPT) whose transcript undergoes complex, regulated alternative splicing, giving rise to several mRNA species. MAPT transcripts are differentially expressed in the nervous system, depending on stage of neuronal maturation and neuron type. MAPT gene mutations have been associated with several neurodegenerative disorders such as Alzheimer's disease, Pick's disease, frontotemporal dementia, cortico-basal degeneration and progressive supranuclear palsy.

### Molecular Mass

45.7 kDa

### AA Sequence

MAEPRQEFVMDHAGTYGLGDRKDQGGYTMHQDQEGD TDAGLKESPLQTPTED  
 GSEEPGSETSDAKSTPTAEDVTAPLVDEGAPGKQAAAQPHT EIP EGTTAEEAGIGDT  
 PSLEDEAAGHV TQARMVSKSKDGTGSDDKKAKGADGKTKIATPRGAAPP GQKQQA  
 NATRIPAKTPPAPKTPPSSGEPKSGDRSGYSSPGSPGTPGSR SRTPSLPTPPTRE  
 PPKVAVVRTPPKSPSSAKSRLQTAPVPM PDLKNVSKIGSTENLKHQP GGGK VQIIN  
 KKLDSLNVQSKCGSKDNIKHVPGGGSVQIVYKPV DLSKVTSKCGSLGNIHHKPGGG

 Tel: 1-631-559-9269 1-516-512-3133

 Email: [info@creative-biomart.com](mailto:info@creative-biomart.com)  Fax: 1-631-938-8127

 45-1 Ramsey Road, Shirley, NY 11967, USA

QVEVKSEKLDKDRVQSKIGSLDNITHVPGGGNKKIETHKLTFRENAKAKTDHGAEIV  
 YKSPVVSGDTSRHLNSVSSTGSDIMVDSPQLATLADEVASLAKQGLTRTRPLEQK  
 LISEEDLAANDILDYKDDDDKV

**Purity** > 80% as determined by SDS-PAGE and Coomassie blue staining

**Stability** Stable for 3 months from receipt of products under proper storage and handling conditions.

**Storage** Store at -80 centigrade. Avoid repeated freeze-thaw cycles.

**Concentration** 50 µg/mL as determined by BCA

**Storage Buffer** 100 mM glycine, 25 mM Tris-HCl, pH 7.3.

## GENE INFORMATION

**Gene Name** [MAPT microtubule associated protein tau \[ Homo sapiens \(human\) \]](#)

**Official Symbol** [MAPT](#)

**Synonyms** MAPT; microtubule associated protein tau; DDPAC; FTDP-17; MAPTL; MSTD; MTBT1; MTBT2; PPND; PPP1R103; TAU; microtubule-associated protein tau; G protein beta1/gamma2 subunit-interacting factor 1; PHF-tau; neurofibrillary tangle protein; paired helical filament-tau; protein phosphatase 1, regulatory subunit 103

**Gene ID** [4137](#)

**mRNA Refseq** [NM\\_005910](#)

**Protein Refseq** [NP\\_005901](#)

 Tel: 1-631-559-9269 1-516-512-3133

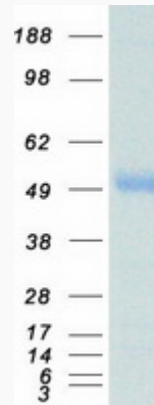
 Email: [info@creative-biomart.com](mailto:info@creative-biomart.com)  Fax: 1-631-938-8127

 45-1 Ramsey Road, Shirley, NY 11967, USA

**MIM** 157140

**UniProt ID** P10636

**SDS-PAGE**



 Tel: 1-631-559-9269 1-516-512-3133

 Email: [info@creative-biomart.com](mailto:info@creative-biomart.com)  Fax: 1-631-938-8127

 45-1 Ramsey Road, Shirley, NY 11967, USA