

Recombinant Human SAMHD1 Protein, Myc/DDK-tagged

Cat. No. MAPT-22H Lot. No. (See product label)

SPECIFICATION

Product Overview	Recombinant protein of human microtubule-associated protein tau (MAPT), transcript variant 2 with a C-Myc/DDK tag was expressed in HEK293T.
Species	Human
Source	HEK293
Description	This gene encodes the microtubule-associated protein tau (MAPT) whose transcript undergoes complex, regulated alternative splicing, giving rise to several mRNA species. MAPT transcripts are differentially expressed in the nervous system, depending on stage of neuronal maturation and neuron type. MAPT gene mutations have been associated with several neurodegenerative disorders such as Alzheimer's disease, Pick's disease, frontotemporal dementia, cortico-basal degeneration and progressive supranuclear palsy.
Molecular Mass	45.7 kDa
Purity	> 80% as determined by SDS-PAGE and Coomassie blue staining
Stability	Stable for 12 months from the date of receipt of the product under proper storage and handling conditions. Avoid repeated freeze-thaw cycles.
Storage	Store at -80 centigrade.
Concentration	>50 µg/mL as determined by microplate BCA method

 Tel: 1-631-559-9269 1-516-512-3133

 Email: info@creative-biomart.com  Fax: 1-631-938-8127

 45-1 Ramsey Road, Shirley, NY 11967, USA

Storage Buffer 25 mM Tris.HCl, pH 7.3, 100 mM glycine, 10% glycerol

GENE INFORMATION

Gene Name [MAPT microtubule associated protein tau \[Homo sapiens \(human\) \]](#)

Official Symbol [MAPT](#)

Synonyms MAPT; microtubule associated protein tau; TAU; MSTD; PPND; DDPAC; MAPTL; MTBT1; MTBT2; tau-40; FTDP-17; PPP1R103; microtubule-associated protein tau; G protein beta1/gamma2 subunit-interacting factor 1; PHF-tau; neurofibrillary tangle protein; paired helical filament-tau; protein phosphatase 1, regulatory subunit 103

Gene ID [4137](#)

mRNA Refseq [NM_005910](#)

Protein Refseq [NP_005901](#)

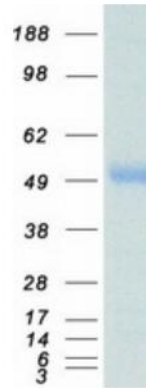
MIM [157140](#)

UniProt ID [P10636](#)

 Tel: 1-631-559-9269 1-516-512-3133

 Email: info@creative-biomart.com  Fax: 1-631-938-8127

 45-1 Ramsey Road, Shirley, NY 11967, USA

SDS-PAGE

Coomassie blue staining of purified MAPT protein. The protein was produced from HEK293T cells transfected with MAPT cDNA clone using MegaTran 2.0.

 Tel: 1-631-559-9269 1-516-512-3133

 Email: info@creative-biomart.com  Fax: 1-631-938-8127

 45-1 Ramsey Road, Shirley, NY 11967, USA