

# Recombinant Human MAPT Protein, Myc/DDK-tagged, C13 and N15-labeled

**Cat. No.** MAPT-3001H    **Lot. No.** (See product label)

## SPECIFICATION

### Product Overview

MAPT MS Standard C13 and N15-labeled recombinant protein (NP\_058518) with a C-terminal MYC/DDK tag, was expressed in HEK293 cells.

### Species

Human

### Source

HEK293

### Description

This gene encodes the microtubule-associated protein tau (MAPT) whose transcript undergoes complex, regulated alternative splicing, giving rise to several mRNA species. MAPT transcripts are differentially expressed in the nervous system, depending on stage of neuronal maturation and neuron type. MAPT gene mutations have been associated with several neurodegenerative disorders such as Alzheimer's disease, Pick's disease, frontotemporal dementia, cortico-basal degeneration and progressive supranuclear palsy.

### Molecular Mass

39.8 kDa

### AA Sequence

MAEPRQEFVEMDHAGTYGLGDRKDQGGYTMHQDQEGD TDAGLKAE EAGIGDTP  
SLEDEAAGHV TQARMVSKSKDGTGSDDKKAKGADGKTKIATPRGAAPPGQKGQAN  
ATRIPAKTPPAPKTPPSSGEPKSGDRSGYSSPGSPGTPGSRSRTPSLPTPPTREP  
KKVAVVRTPPKSPSSAKSRLQTAPVPM PDLKNVSKIGSTENLKHQPGGGK VQIINK  
KLDLSNVQSKCGSKDNIKHVPGGGSVQIVYKPV DLSKVTSKCGSLGNIHHKPGGGQ  
VEVKSEKLD FKDRVQSKIGSLDNITHVPGGGNKKIETHK LTFRENAKAKTDHGAEIVY

 Tel: 1-631-559-9269    1-516-512-3133

 Email: [info@creative-biomart.com](mailto:info@creative-biomart.com)     Fax: 1-631-938-8127

 45-1 Ramsey Road, Shirley, NY 11967, USA

KSPVVSGDTSPRHLSNVSSSTGSIDMVDSPQLATLADEVVSASLAKQGLTRTRPLEQKL  
ISEEDLAANDILDYKDDDDKV

**Purity** > 80% as determined by SDS-PAGE and Coomassie blue staining

**Stability** Stable for 3 months from receipt of products under proper storage and handling conditions.

**Storage** Store at -80 centigrade. Avoid repeated freeze-thaw cycles.

**Concentration** 50 µg/mL as determined by BCA

**Storage Buffer** 100 mM glycine, 25 mM Tris-HCl, pH 7.3.

## GENE INFORMATION

**Gene Name** [MAPT microtubule-associated protein tau \[ Homo sapiens \(human\) \]](#)

**Official Symbol** [MAPT](#)

**Synonyms** MAPT; microtubule-associated protein tau; DDPAC, MAPTL; FLJ31424; FTDP 17; G protein beta1/gamma2 subunit interacting factor 1; MGC138549; microtubule associated protein tau; isoform 4; MSTD; MTBT1; MTBT2; PPND; tau; TAU; PHF-tau; paired helical filament-tau; neurofibrillary tangle protein; microtubule-associated protein tau, isoform 4; G protein beta1/gamma2 subunit-interacting factor 1; DDPAC; MAPTL; FTDP-17;

**Gene ID** [4137](#)

**mRNA Refseq** [NM\\_016834](#)

 Tel: 1-631-559-9269 1-516-512-3133

 Email: [info@creative-biomart.com](mailto:info@creative-biomart.com)  Fax: 1-631-938-8127

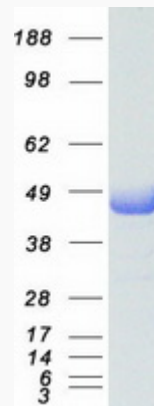
 45-1 Ramsey Road, Shirley, NY 11967, USA

**Protein Refseq**      NP\_058518

**MIM**                    157140

**UniProt ID**            P10636

**SDS-PAGE**



 Tel: 1-631-559-9269    1-516-512-3133

 Email: [info@creative-biomart.com](mailto:info@creative-biomart.com)     Fax: 1-631-938-8127

 45-1 Ramsey Road, Shirley, NY 11967, USA