

Recombinant Human MAPT protein, His-tagged

Cat. No. MAPT-3533H Lot. No. (See product label)

SPECIFICATION

Product Overview	Recombinant Human MAPT protein(P10636)(1-441aa), fused with N-terminal His tag, was expressed in HEK293.
Species	Human
Source	HEK293
ProteinLength	1-441aa
Tag	N-His
Form	Lyophilized from a 0.2 um filtered 20 mM Tris-HCl, 0.5 M NaCl, 6% Trehalose, pH 8.0
Bio-activity	Measured by its binding ability in a functional ELISA. Immobilized Human MAPT at 2 µg/ml can bind Anti-MAPT recombinant antibody, the EC50 is 4.547-6.284 ng/mL.
Molecular Mass	49.5 kDa
Endotoxin	Less than 1.0 EU/ug as determined by LAL method.
Purity	Greater than 95% as determined by SDS-PAGE.
Storage	Store at -20°C/-80°C upon receipt, aliquoting is necessary for mutiple use. Avoid repeated freeze-thaw cycles.

 Tel: 1-631-559-9269 1-516-512-3133

 Email: info@creative-biomart.com  Fax: 1-631-938-8127

 45-1 Ramsey Road, Shirley, NY 11967, USA

Reconstitution

We recommend that this vial be briefly centrifuged prior to opening to bring the contents to the bottom. Please reconstitute protein in deionized sterile water to a concentration of 0.1-1.0 mg/mL. We recommend to add 5-50% of glycerol (final concentration) and aliquot for long-term storage at -20°C/-80°C.

AA Sequence

MAEPRQEFVEMEDHAGTYGLGDRKDQGGYTMHQDQEGD TDAGLKESPLQTPTED
 GSEEPGSETSDAKSTPTAEDVTAPLVDEGAPGKQAAAQPHT EIP EGTTAEEAGIGDT
 PSLEDEAAGHV TQARMVSKSKDGTGSDDKKAKGADGKTKIATPRGAAPP GQKQQA
 NATRIPAKTPPAPKTPPSSGEPKSGDRSGYSSPGSPGTPGSR SRTPSLPTPTRE
 PKKVAVVRTPPKSPSSAKSRLQTAPVMPDLKNVSKIGSTENLKHQP GGGKVIIN
 KKLDLSNVQSKCGSKDNIKHVPGGGSVQIVYKPV DLSKVTSKCGSLGNIHHKPGGG
 QVEVKSEKLDKDRVQSKIGSLDNITHVPGGGNKKIETHK LTFRENAKAKTDHGAEIV
 YKSPVSGDTSRHL SNVSSTGSIDMVDSPQLATLADEV SASLAKQGL

GENE INFORMATION
Gene Name

MAPT microtubule-associated protein tau [Homo sapiens]

Official Symbol

MAPT

Synonyms

MAPT; microtubule-associated protein tau; DDPAC, MAPTL; FLJ31424; FTDP 17; G protein beta1/gamma2 subunit interacting factor 1; MGC138549; microtubule associated protein tau; isoform 4; MSTD; MTBT1; MTBT2; PPND; tau; TAU; PHF-tau; paired helical filament-tau; neurofibrillary tangle protein; microtubule-associated protein tau, isoform 4; G protein beta1/gamma2 subunit-interacting factor 1; DDPAC; MAPTL; FTDP-17;

Gene ID

4137

mRNA Refseq

NM_001123066

 Tel: 1-631-559-9269 1-516-512-3133

 Email: info@creative-biomart.com  Fax: 1-631-938-8127

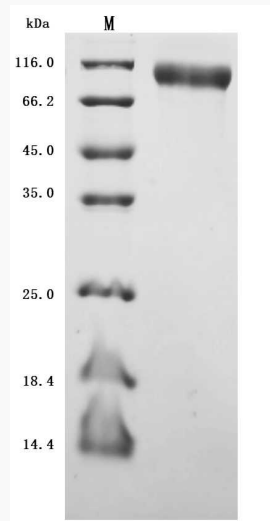
 45-1 Ramsey Road, Shirley, NY 11967, USA

Protein Refseq NP_001116538

MIM 157140

UniProt ID P10636

SDS-PAGE



 Tel: 1-631-559-9269 1-516-512-3133

 Email: info@creative-biomart.com  Fax: 1-631-938-8127

 45-1 Ramsey Road, Shirley, NY 11967, USA