

Recombinant Human MAPT Protein (216-391), N-AVI-tagged, Biotinylated

Cat. No. MAPT-39H **Lot. No.** (See product label)

SPECIFICATION

Product Overview	Recombinant human Tau-441 (216-391) was expressed in E. coli cells with an N-terminal Avi tag and biotinylated in vitro prior to the final chromatography purification.
Species	Human
Source	E.coli
ProteinLength	216-391
Description	<p>Tau-441 or Tau-F is a member of the Tau family of proteins which function to stabilize the microtubules by binding to them. Tau proteins are subject to phosphorylation and this phenomenon regulates the association of the Tau protein with the microtubules. Deposits of Alzheimer's disease AD-associated proteins, such as hyperphosphorylated Tau, as well as other shared misfolded proteins, such as, myloid precursor protein, ubiquitin, and various chaperones and protein kinases are thought to play a pathologic role in the cognitive decline and muscular failure. Malfunctioning of Tau proteins is associated with microtubules disintegration and collapsing of the neuronal transport system.</p>
Molecular Mass	<p>Observed MW: ~24 kDa. Calculated MW: ~20 kDa.</p>
Purity	The purity of Tau-441 (216-391) was determined to be > 85 % by densitometry.

 Tel: 1-631-559-9269 1-516-512-3133

 Email: info@creative-biomart.com  Fax: 1-631-938-8127

 45-1 Ramsey Road, Shirley, NY 11967, USA

Stability	One year at -70 centigrade from date of shipment.
Storage	Store product at -70 centigrade. For optimal storage, aliquot target into smaller quantities after centrifugation and store at recommended temperature. For most favorable performance, avoid repeated handling and multiple freeze/thaw cycles.
Concentration	0.2 µg/µL
Storage Buffer	Recombinant protein stored in the buffer: 50mM Tris-HCl, pH 7.5, 150mM NaCl, 0.25mM DTT, 25% glycerol.
Shipping	Dry ice
Conjugation	Biotin

GENE INFORMATION

Gene Name	MAPT microtubule associated protein tau [Homo sapiens (human)]
Official Symbol	MAPT
Synonyms	MAPT; microtubule associated protein tau; TAU; MSTD; PPND; DDPAC; MAPTL; MTBT1; MTBT2; tau-40; FTDP-17; PPP1R103; Tau-PHF6;
Gene ID	4137
mRNA Refseq	NM_016841
Protein Refseq	NP_058525
MIM	157140

 Tel: 1-631-559-9269 1-516-512-3133

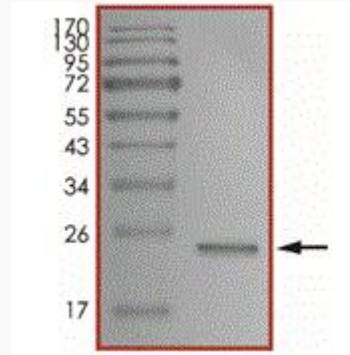
 Email: info@creative-biomart.com  Fax: 1-631-938-8127

 45-1 Ramsey Road, Shirley, NY 11967, USA

UniProt ID

P10636

Purity



 Tel: 1-631-559-9269 1-516-512-3133

 Email: info@creative-biomart.com  Fax: 1-631-938-8127

 45-1 Ramsey Road, Shirley, NY 11967, USA