

Recombinant Human MAPT Protein (Gly243-Pro372), N-His tagged

Cat. No. MAPT-4498H Lot. No. (See product label)

SPECIFICATION

Product Overview	Recombinant human MAPT / Tau / PHF-tau (Gly243-Pro372) fused with the N-His tag was expressed in E. coli.
Species	Human
Source	E.coli
ProteinLength	Gly243-Pro372
Form	Lyophilized powder/frozen liquid
Molecular Mass	15.81 kDa
Purity	>90% as determined by SDS-PAGE.
Notes	For research use only.
Storage	Use a manual defrost freezer and avoid repeated freeze thaw cycles. Store at 2 to 8 centigrade for one week. Store at -20 to -80 centigrade for twelve months from the date of receipt.
Storage Buffer	0.01M PBS, pH 7.4, 0.02% NLS
Reconstitution	Reconstitute in sterile water for a stock solution.

 Tel: 1-631-559-9269 1-516-512-3133

 Email: info@creative-biomart.com  Fax: 1-631-938-8127

 45-1 Ramsey Road, Shirley, NY 11967, USA

Shipping They are shipped out with dry ice/blue ice unless customers require otherwise.

GENE INFORMATION

Gene Name [MAPT microtubule-associated protein tau \[Homo sapiens \(human\) \]](#)

Official Symbol [MAPT](#)

Synonyms MAPT; microtubule-associated protein tau; DDPAC, MAPTL; FLJ31424; FTDP 17; G protein beta1/gamma2 subunit interacting factor 1; MGC138549; microtubule associated protein tau; isoform 4; MSTD; MTBT1; MTBT2; PPND; tau; TAU; PHF-tau; paired helical filament-tau; neurofibrillary tangle protein; microtubule-associated protein tau, isoform 4; G protein beta1/gamma2 subunit-interacting factor 1; DDPAC; MAPTL; FTDP-17;

Gene ID [4137](#)

mRNA Refseq [NM_001123066](#)

Protein Refseq [NP_001116538](#)

MIM [157140](#)

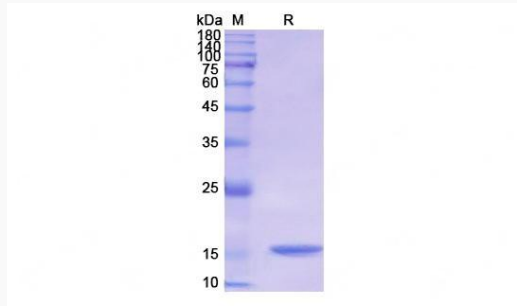
UniProt ID [P10636](#)

 Tel: 1-631-559-9269 1-516-512-3133

 Email: info@creative-biomart.com  Fax: 1-631-938-8127

 45-1 Ramsey Road, Shirley, NY 11967, USA

SDS-PAGE



 Tel: 1-631-559-9269 1-516-512-3133

 Email: info@creative-biomart.com  Fax: 1-631-938-8127

 45-1 Ramsey Road, Shirley, NY 11967, USA